

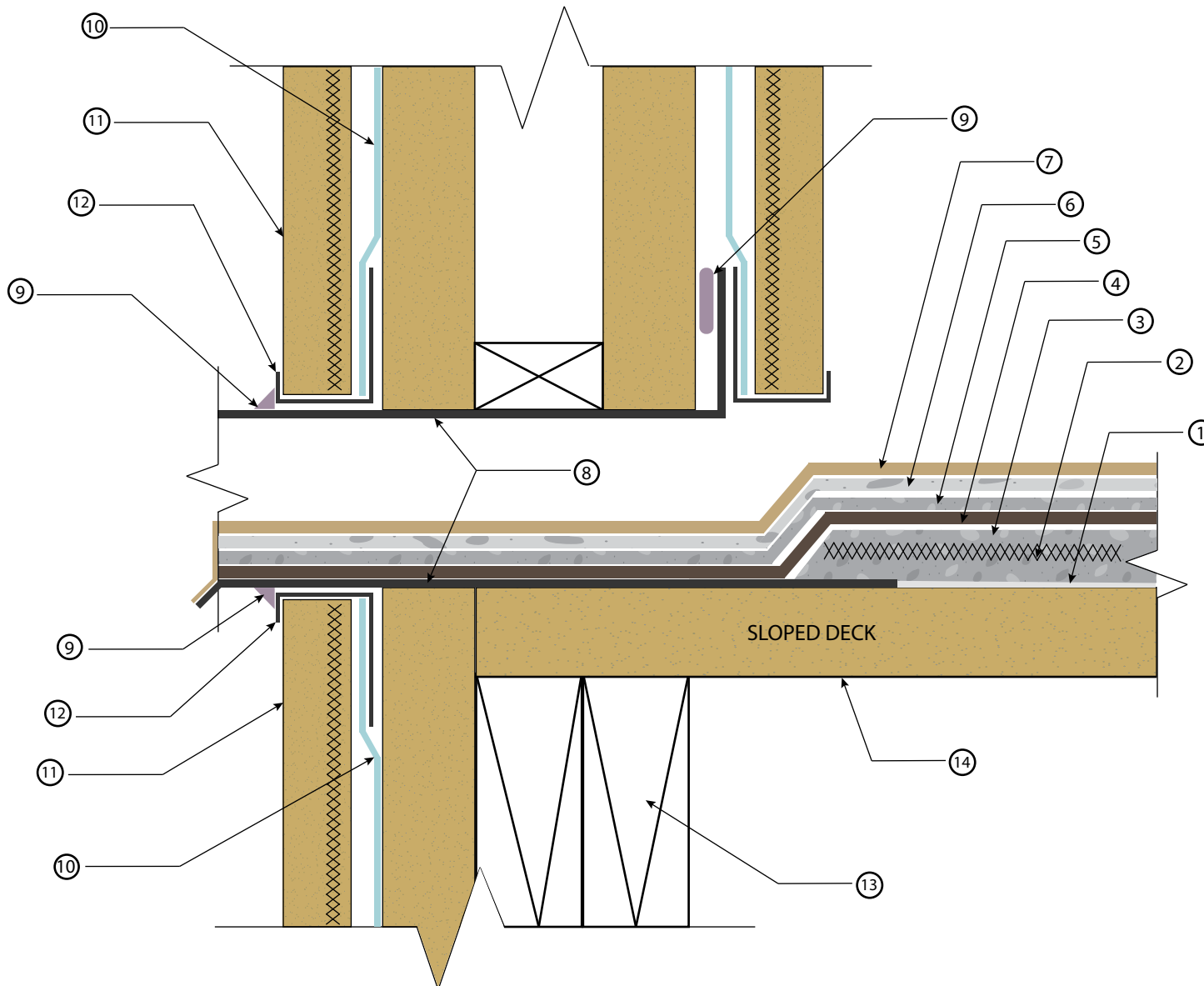
KEYNOTES

- ① WP-40 Sheet Membrane (6" or 36")
- ② WP-25 Metal or WP-30 Glass Lath
- ③ Base Coat
- ④ WP-95 Membrane & Fabric (Pro System)
- ⑤ Body Coat
- ⑥ Texture Coat (Optional)
- ⑦ Topcoat
- ⑧ Scupper Bonderized or Stainless (by others)
- ⑨ WP-53 Hybrid Sealant
- ⑩ Building Paper (by others)
- ⑪ Stucco Finish (by others)
- ⑫ Stucco Stop (by others)
- ⑬ Structural Design (by others)
- ⑭ 5/8" MIN. Exposure 1 Sheathing (3/4" Recommended)

IAPMO ER - 517

- Standard overlap is bottom to top with a 4" overlap.
- For maximum adhesion, WP-43 Sheet Membrane Primer should be used.
- Apply WP-53 on all flashing seams and overlaps.
- Minimum 5/8" exterior grade plywood.
- Minimum 1/4" slope required on all decks
- Refer to local building codes and standards.
- Refer to system and product specification sheets.

All details are for reference only and should be evaluated by architect. These details are not a substitute for specifications, plans or evaluation reports. Architect, consultant or similar professional should review prior to major waterproofing applications.



REV. 8/20/25 TC

SHUR DECK SYSTEM - SCUPPER DETAIL

DIVISION 07 18 13
Pedestrian Traffic Coatings

SCALE : NTS



westcoat
SPECIALTY COATING SYSTEMS

4007 Lockridge Street • San Diego, CA • 92102
800.250.4519 • westcoat.com