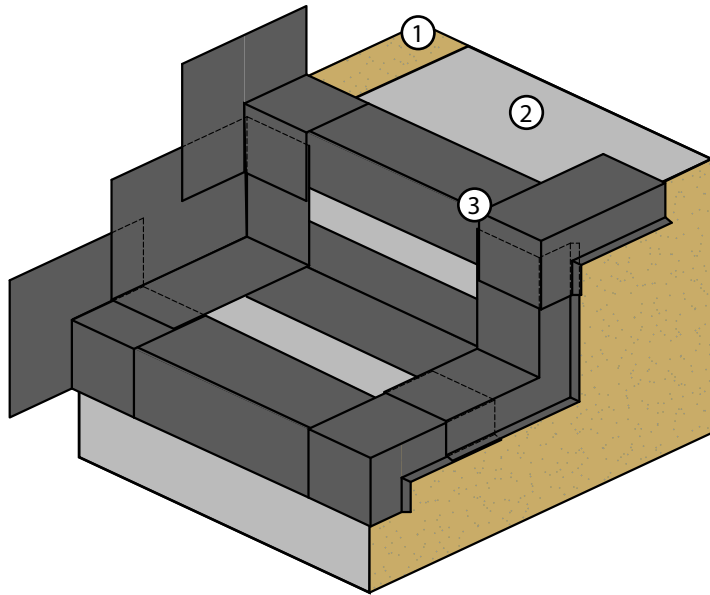
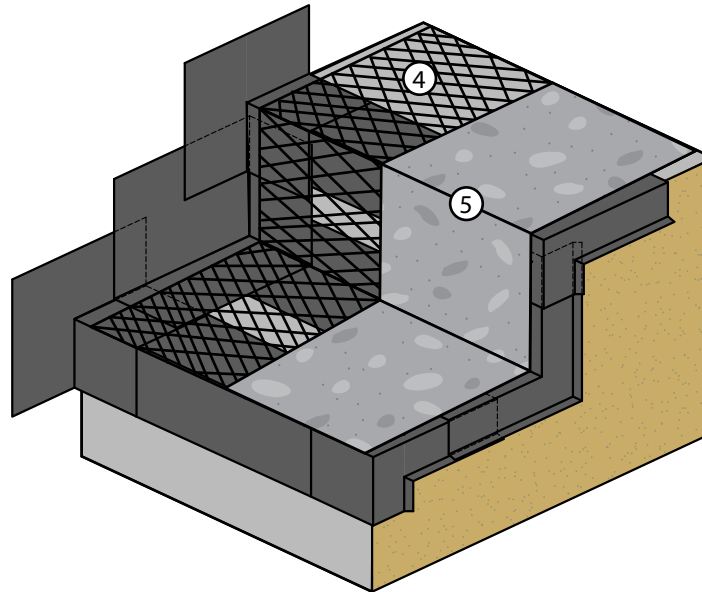


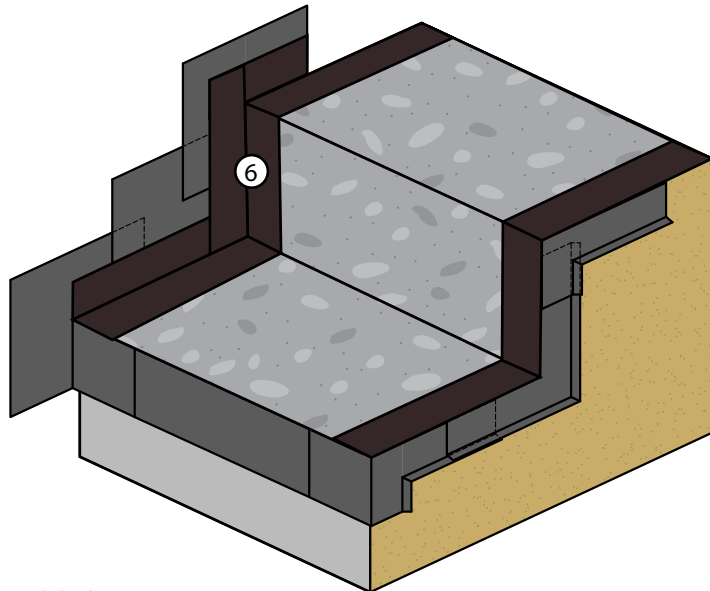
Step 1. Sheet Membrane & Sheet Metal



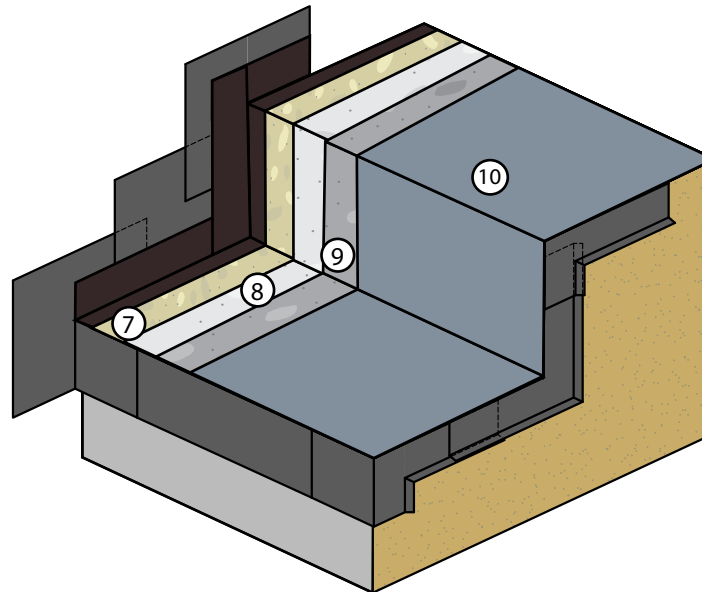
Step 2. Metal Lath and Base Coat



Step 3. WP Wrap



Step 4. Fiberlath Resin Membrane, Slurry Coat, Texture Coat and Topcoat.



## KEYNOTES

- ① Plywood Substrate
- ② WP-40 Sheet Membrane
- ③ 26 gauge Bonderized Sheet Metal
- ④ WP-25 Metal Lath
- ⑤ Base Coat
- ⑥ WP Wrap
- ⑦ Fiberlath Resin Membrane
- ⑧ Slurry Coat
- ⑨ Texture Coat
- ⑩ SC-10 Topcoat

IAPMO - ER-587

- Standard overlap is bottom to top with a 4" overlap.
- Apply WP-51 on all flashing seams and overlaps.
- Minimum 5/8" exterior grade plywood.
- Minimum 1/4" slope required on all decks
- Refer to local building codes and standards.
- Refer to all related Product and System Specifications for additional information.

REV. 9/25/23 TC

## ALX PRO WITH WP WRAP - STAIR DETAIL

DIVISION 07 18 13  
Pedestrian Traffic Coatings

SCALE : NTS



**westcoat**  
SPECIALTY COATING SYSTEMS

4007 Lockridge Street • San Diego, CA • 92102  
800.250.4519 • westcoat.com