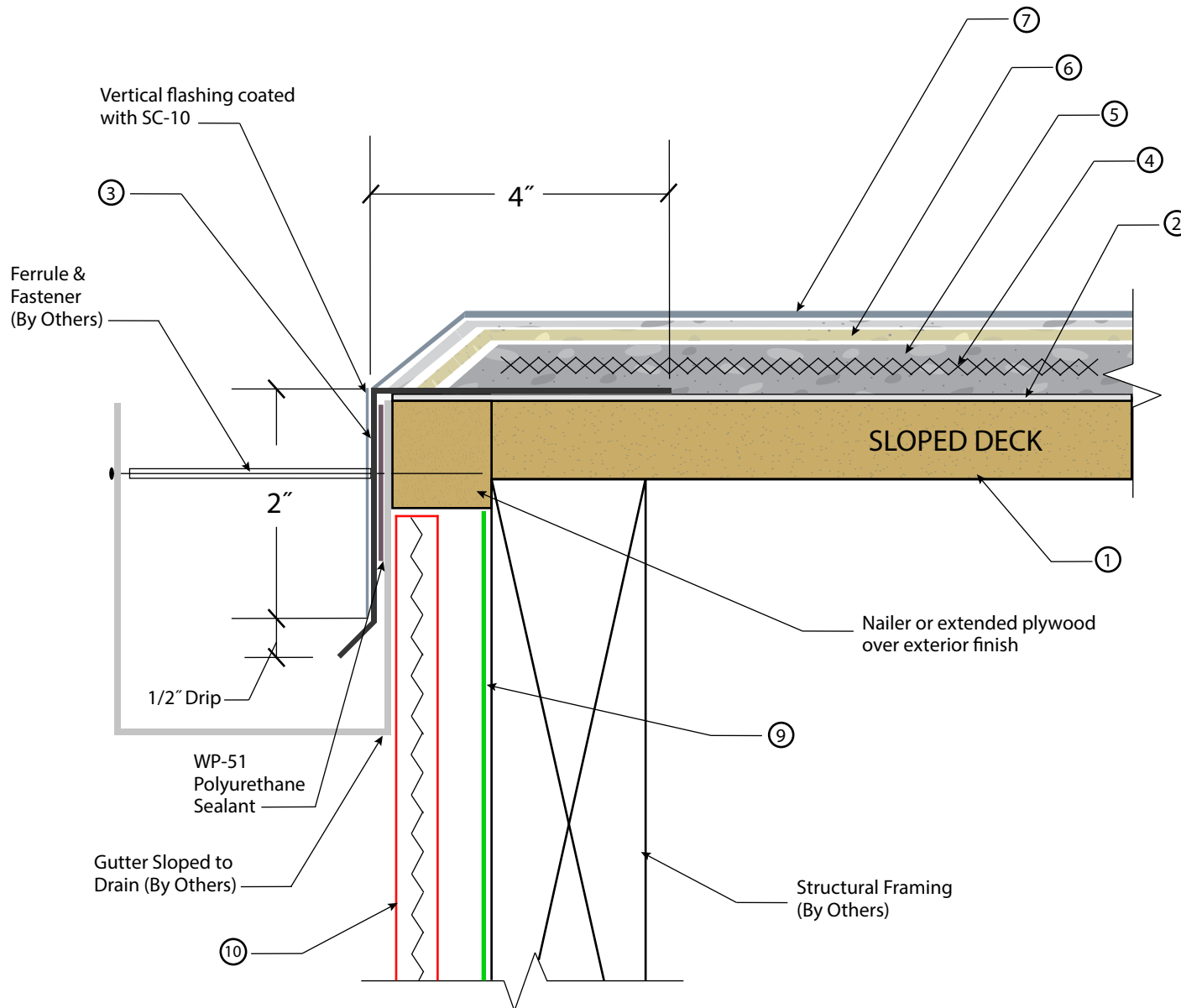


KEYNOTES

- ① 5/8" MIN. Exposure 1 Sheathing (3/4" Recommended)
- ② WP-40 Sheet Membrane
- ③ 26 Gauge, Bonderized Flashing MIN. 4" on deck and 6" height.
- ④ WP-25 Metal Lath
- ⑤ Base Coat
- ⑥ Fiberlath Resin Membrane
- ⑦ Slurry Coat
- ⑧ Texture Coat and Topcoat
- ⑨ Building Paper (By Others)
- ⑩ Stucco Finish (By Others)

IAPMO ER - 587

- Metal Lath and Base Coat held back from edge by 2"
- Fiberlath Resin Membrane held back from edge by 1/2"
- Slurry Coat, Texture Coat and Topcoat applied to edge of deck.
- Standard overlap is bottom to top with a 4" overlap.
- Apply WP-51 on all flashing seams and overlaps.
- Minimum 5/8" exterior grade plywood.
- Minimum 1/4" slope required on all decks
- Refer to local building codes and standards.



ALX PRO - EDGE METAL FLASHING - GUTTER DETAIL

DIVISION 07 18 13
Pedestrian Traffic Coatings

SCALE : NTS



westcoat
SPECIALTY COATING SYSTEMS

4007 Lockridge Street • San Diego, CA • 92102
800.250.4519 • westcoat.com