

# Water-Based Stain SC-35



**westcoat**<sup>®</sup>  
SPECIALTY COATING SYSTEMS

This chart is for reference only. Viewing any color chart is less accurate than a cured sample. Please apply sample on site before beginning any project.

## Applied over TC-4 Fine Texture Cement



Shale | 516



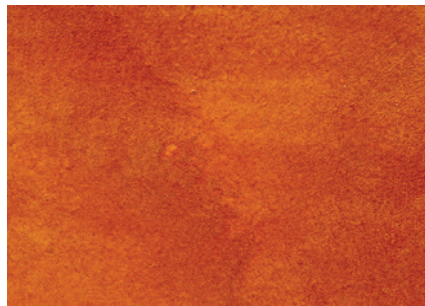
Armor | 514



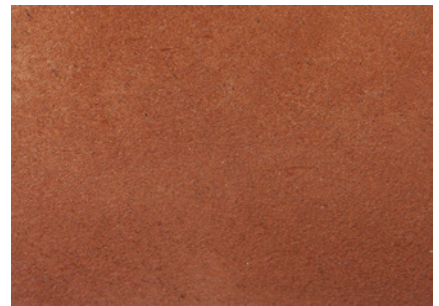
Onyx | 509



Sienna | 513



Copper | 508



Adobe | 515



Sahara | 518



Umber | 521



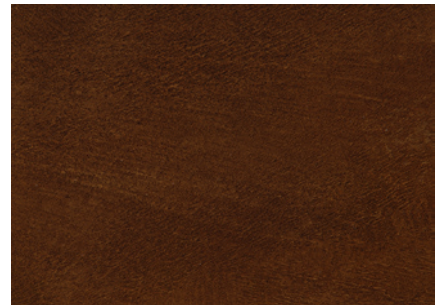
Olive | 520



Camel | 505



Sepia | 511



Mahogany | 501

Not shown but also available in Ivory | 517

**westcoat**<sup>®</sup>  
SPECIALTY COATING SYSTEMS

770 Gateway Center Drive San Diego, CA 92102  
800•250•4519 • Fax 619•262•8606 • westcoat.com

These colors are approximate and will vary.  
FOR PROFESSIONAL USE ONLY