

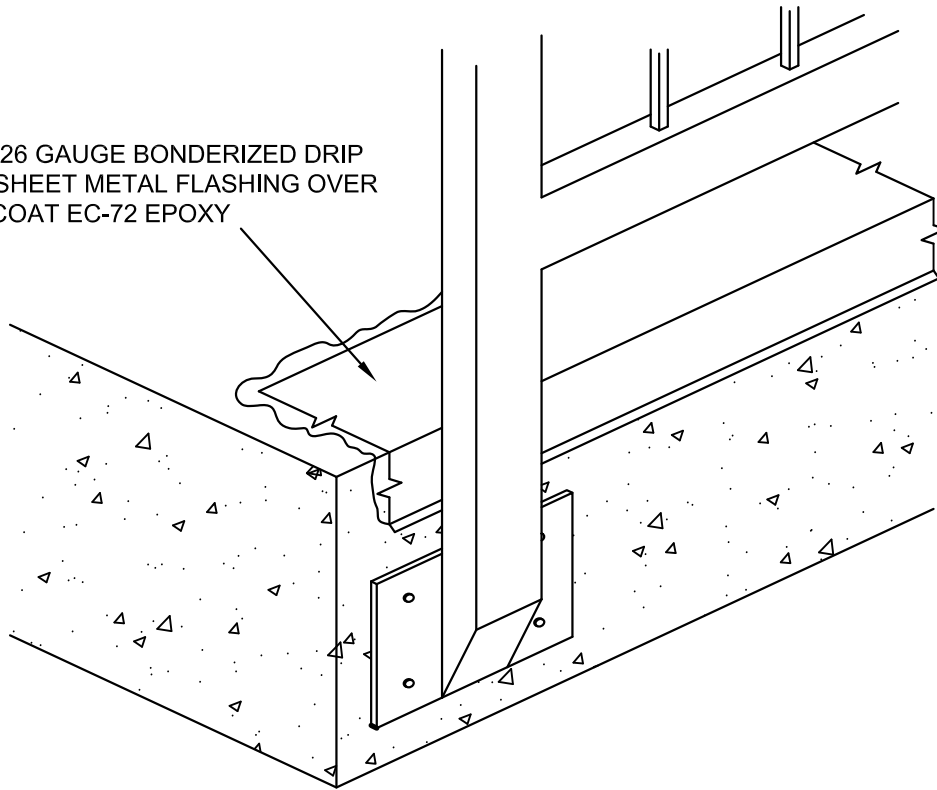
WESTCOAT MACOAT SIDE MOUNT RAILING DETAIL (OVER CONCRETE)

NOT TO SCALE

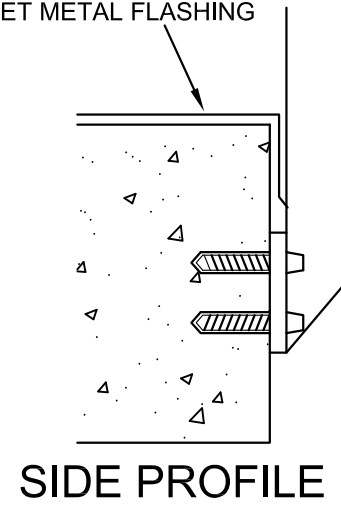
NOTES:

- APPLY WP-51 ON ALL FLASHING SEAMS AND OVERLAPS. STANDARD OVERLAP IS BOTTOM TO TOP WITH A 4" OVERLAP.
- 2500 PSI MINIMUM FOR CONCRETE SUBSTRATES
- $\frac{5}{8}$ " EXTERIOR GRADE MINIMUM FOR PLYWOOD SUBSTRATE
- $\frac{1}{4}$ " MINIMUM SLOPE REQUIRED ON ALL DECKS
- REFER TO LOCAL BUILDING CODES & STANDARDS

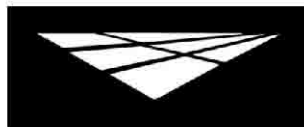
2" X 4" 26 GAUGE BONDERIZED DRIP
EDGE SHEET METAL FLASHING OVER
WESTCOAT EC-72 EPOXY



2" X 4" 26 GAUGE
BONDERIZED DRIP EDGE
SHEET METAL FLASHING



SIDE PROFILE



westcoat

800-250-4519
770 GATEWAY CENTER DRIVE

www.westcoat.com
SAN DIEGO, CA. 92102