



westcoat®

**MADE IN U.S.A.
SINCE 1981**



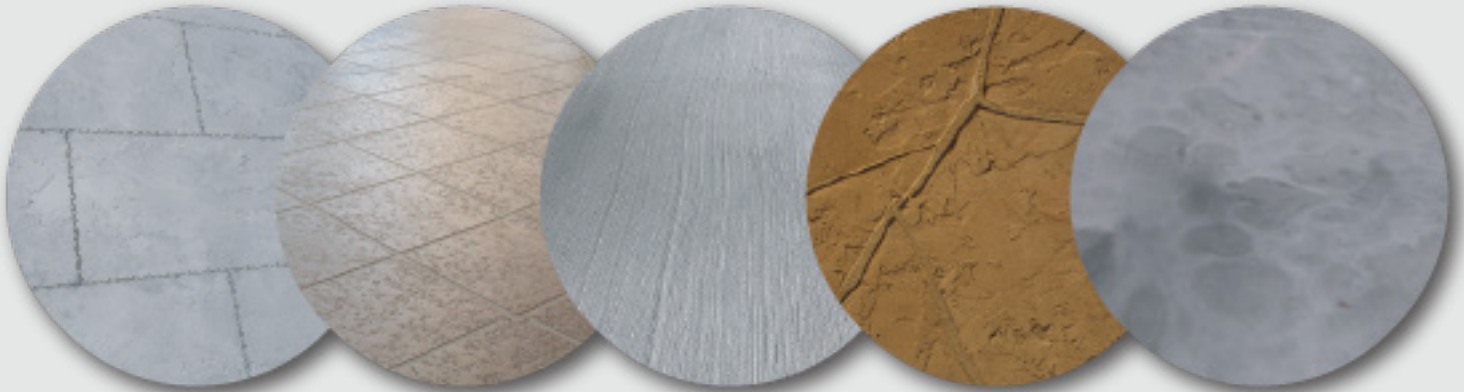
DECKS - BALCONIES - ELEVATED WALKWAYS



THE RIGHT FINISH FOR EVERY JOB.

No need to sacrifice style when choosing a waterproofing system.

Westcoat's waterproofing systems can be customized to meet your design goals. With endless coloring options using our pigmented topcoats and water-based stain coloring systems, you can also opt for a variety of textures, patterns and sealers. Custom finishes can be applied to both ALX and MACoat, offering unlimited design possibilities, we are able to create patterns and textures that transform the surface into a work of art.



Finishing Touch

- Textures vary from smooth or decorative skip trowel to a more aggressive non-slip surface.
- Add patterns by applying Grout Tape for a wood plank look or Stone Strips for a flagstone design.
- Protect with a sealer for any environment whether it's a high traffic multi-family walkway or a residential balcony deck.
- Options to install tile, stone, overlays and epoxy over the slurry coat.
- Solar reflective options meet California Title 24 Cool Roof Requirements.

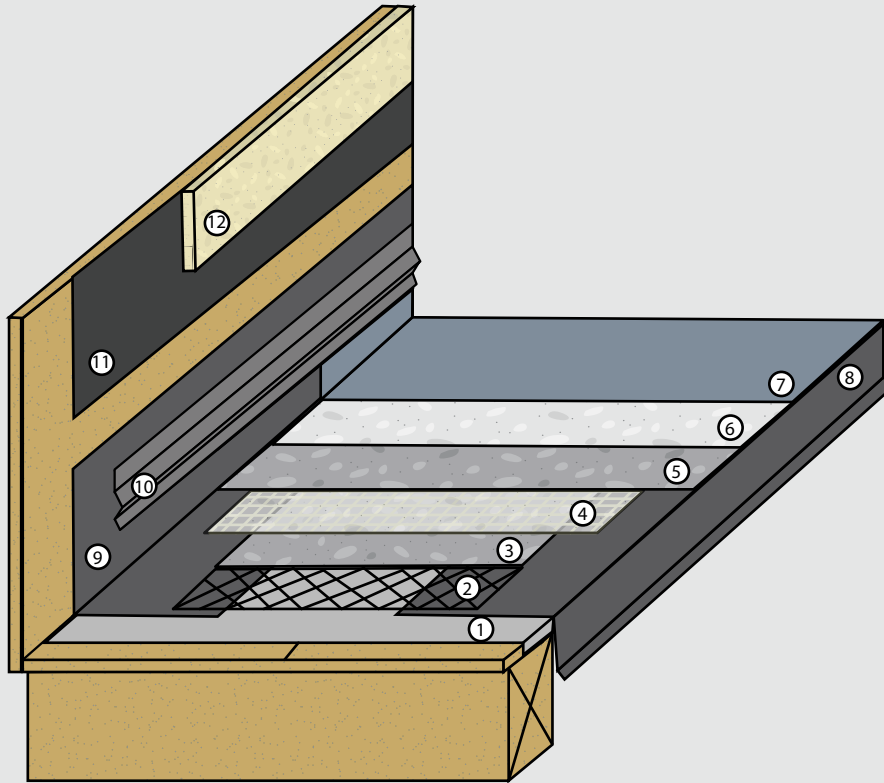
Waterproofing Underlayments

ALX and MACoat can be installed as waterproofing underlayment systems that will receive concrete, tile, stone, or pedestals, as shown. The underlayment systems have additional sheet membranes that provide extra waterproofing protection. These systems are useful for areas where waterproofing is required but an alternative flooring option is desired.



Systems and Solutions

ALX Pro Standard – Overview Architectural Details



KEYNOTES

- ① Sheet Membrane
- ② Metal Lath
- ③ Base Coat
- ④ Fiberlath Resin Membrane
- ⑤ Slurry Coat
- ⑥ Texture Coat
- ⑦ Topcoat
- ⑧ Drip Edge Metal (2"x4")
- 26 gauge, bonderized
- ⑨ Wall-to-deck "L" Metal (6"x4")
- 26 gauge, bonderized
- ⑩ Continuous drip screed
- ⑪ Building Paper
- ⑫ Wall Finish

• Standard overlap is bottom to top with a 4" overlap.

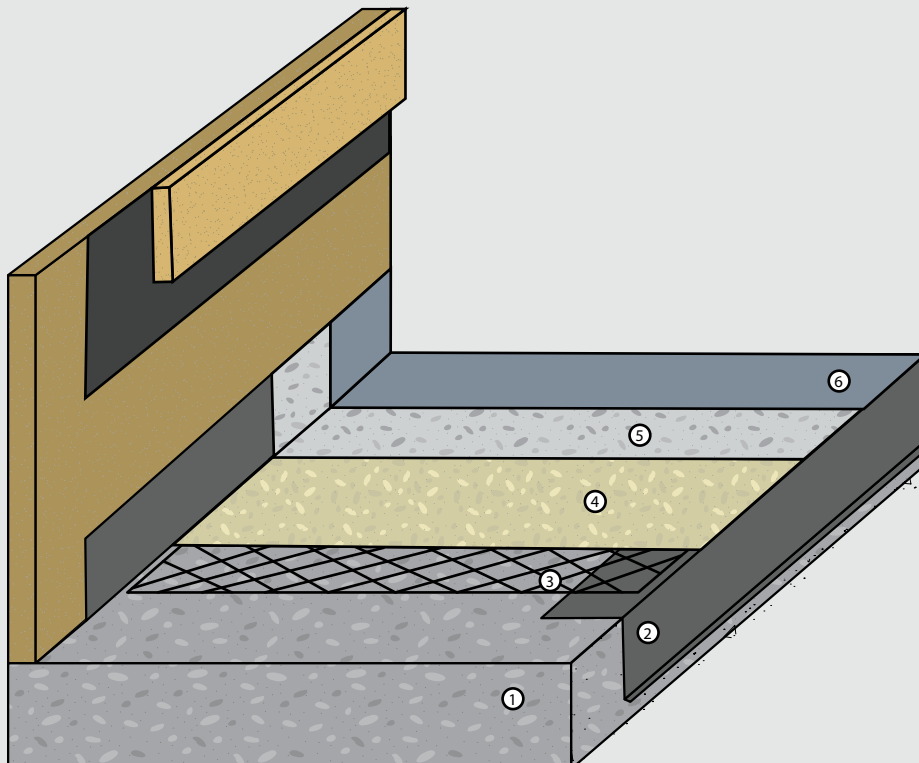
• Apply WP-51 on all flashing seams and overlaps.

• Minimum 5/8" exterior grade plywood.

• Minimum 1/4" slope required on all decks

• Refer to local building codes and standards.

MACoat Standard – Overview Architectural Details



KEYNOTES

- ① Concrete Substrate
- ② Bonderized Flashing
- ③ Fiberlath
- ④ Base Coat
- ⑤ Slurry Coat
- ⑥ Acrylic Topcoat

• Concrete must be a minimum 2,500 PSI.

• Concrete must be cured for a minimum 28 days.

• Concrete substrate must be prepared to a profile equal to ICRI CSP 3.

• Refer to local building codes and standards.

ALX™ Pro | Plywood Waterproofing

ALX™ is a waterproof walking deck system that gives plywood the look and feel of concrete with a decorative appeal. Designed for use on plywood, ALX™ is ideal for areas with heavy traffic or in cases where elimination of the appearance of plywood seams is essential. ALX™ can be stapled through most old deck systems to provide an excellent method for the rehabilitation of problem surfaces. Compared to other WP Systems, Westcoat ALX system is the ultimate in waterproof deck technology.



Up to 20 Year Warranty with WP-40 Full Coverage / ¾" T&G Plywood

COMPONENTS	SYSTEM ATTRIBUTES	MAINTENANCE
WP-10 Staples	IAPMO ER-587	Sweep weekly.
WP-25 Metal Lath	Meets Class A Fire Test ASTM E-108	Hose and broom monthly.
WP-40 Sheet Membrane	Meets One-Hour Fire Rating ASTM E-119	Use diluted degreaser for oil or grease.
WP-47H Fiberlath Heavy Duty	Meets Class I Vapor Retarder ASTM E96	Remove calcium/lime build up with diluted vinegar.
WP-51 Polyurethane Sealant	Meets 2023 LABC & LARC	Inspect every 2-4 years.
WP-81 Cement Modifier	Meets WUI Requirements	Resealed 3 to 5 years.
WP-90 Waterproofing Resin	Sound Reduction	
Topcoat	Heat Reflective CRRC SRI	
TC-1 Basecoat Cement	Custom Colors and Finishes Available	
TC-3 Medium Texture Cement		

ALX Systems Available: Pro (as shown above), Standard, Custom, Solar Reflective, and Underlayment

MACoat™ | Concrete Waterproofing

MACoat™ is a fiberlath reinforced deck system that allows water vapor to migrate up and pass through the coating, while still shedding liquid water from off the top. This is different from most traditional urethane coatings, which are not permeable. In many cases it can be applied over existing deck systems to provide an excellent method for the rehabilitation of problem surfaces. Permeable vapor retarder and waterproofing system.



Up to 15 Year Warranty options.

COMPONENTS	SYSTEM ATTRIBUTES	MAINTENANCE
WP-51 Polyurethane Sealant EC-72 Epoxy Patch Gel WP-47H Fiberlath WP-47A Seam Tape WP-90 Waterproofing Resin TC-1 Basecoat Cement Topcoat	IAPMO ER-587 Class A Fire-Retardant Roofing System One-Hour Fire Resistance Rating Breathable Heat Reflective CRRC SRI Custom Colors and Finishes Available	Sweep weekly. Hose and broom monthly. Use diluted degreaser for oil or grease. Remove calcium/lime build up with diluted vinegar. Inspect every 2-4 years. Resealed 3 to 5 years.

MACoat Systems Available: Standard (as shown above), Custom, Solar Reflective, and Underlayment



westcoat®

THE ULTIMATE IN WATERPROOF DECK TECHNOLOGY

Take the guesswork out of selecting and applying specialty coatings with Westcoat's simplified solution for every type of coating application. An all-inclusive line of step-by-step coating products makes selecting the right process for every job even easier.

With 40 years of industry experience, Westcoat offers innovative, durable surface solutions for the discriminating professional.

Engineered to achieve superior results, Westcoat Specialty Coating Systems delivers numerous protective, textured and decorative options for a variety of applications.



westcoat

HAVE A QUESTION? GET IN TOUCH:

westcoat.com / 800.250.4519 / info@westcoat.com

4007 Lockridge Street, San Diego, CA 92102, USA.