

westcoat[®]
SPECIALTY COATING SYSTEMS

WATER-BASED STAIN GRIND & SEAL



SURFACE COAT
PROTECTIVE SEALERS & STAINS



westcoat[®]
SPECIALTY COATING SYSTEMS

WATER-BASED STAIN GRIND & SEAL SUBMITTAL PACKAGE

**DIVISION 9 – FINISHES
SECTION 09 61 19 CONCRETE FLOOR STAINING**

TABLE OF CONTENTS

System Brochure	3-5
System Specification Sheet	6-10
CSI Specification	11-15
Color Chart	16-17
Sample Warranty	18-19
General Maintenance	20-22



westcoat®
SPECIALTY COATING SYSTEMS

SYSTEM BROCHURE



ABOUT WATER-BASED STAIN:

Add vibrancy to concrete surfaces with Westcoat's Water-Based Stain. Containing no caustic ingredients, Water-Based Stain can be used as an alternative to solvent and acid-based stains making it an environmentally friendly option. Ideal for a custom finish over Stamp-It, Texture-Crete or ALX systems, Water-Based Stain is perfect for driveways, patios, interior living spaces, or anywhere a unique colored concrete look is desired. No rinsing or neutralizing necessary.



MAKE YOUR MARK.

- Low VOC
- Low Odor
- Decorative
- Ease of Use
- Available in 12 colors
- No acidic ingredients, no rinsing needed
- May contribute to LEED credits
- No need to tear out existing concrete



FOR PROFESSIONAL USE ONLY.





WATER-BASED STAIN GRIND & SEAL SYSTEM

Westcoat's Water-Based Stain Grind & Seal System is a process of grinding the concrete and applying SC-35 Water-Based Stain and sealer of choice. Designed to be used directly over existing concrete primarily on interior floors where a colored stain is desired. Grind & Seal is a perfect way to color and protect plain or old concrete with light to medium traffic.

OVER TEXTURE-CRETE

SC-35 is a highly versatile coloring agent for use over polymer modified cementitious coating systems such as Texture-Crete Custom Finish, TC Interior, and Stamp-It. Single or multiple colors may be used to create unlimited designs.



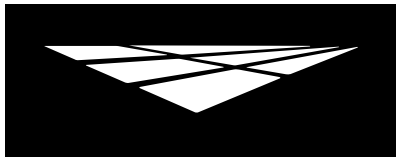
Concrete Stain Seal





westcoat®
SPECIALTY COATING SYSTEMS

SYSTEM SPECIFICATION SHEET



Description

Westcoat's Water-Based Stain Grind & Seal System is a process of grinding the concrete and applying a water-based stain and sealer. There are no acidic ingredients used and the stain is low in VOC making it a more environmentally friendly system.

Uses

The Water-Based Stain Grind & Seal System is designed for interior applications where a colored stain is desired. This is a light duty system, designed for residential interior floors with light foot traffic. The standard sealer in this system is EC-11, which is suitable for light duty traffic areas. Alternative sealer options EC-32, EC-95G, EC-95F and SC-65 are suitable for medium duty traffic areas. This system is not intended for use in heavy traffic areas or with vehicular traffic.

System Overview



System Data		
Coverages	Water-Based Stain 600-1000 ft ² per gallon	Sealer 300-600 ft ² per gallon
Components	SC-35 Water-Based Stain EC-11 WB Epoxy Topcoat	Shelf Life 2 years 3 years

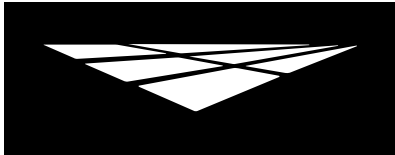
Advantages

Low VOC • Light Durability • Renews Old Concrete • Low or High Gloss Sealers • Easy to Use • Wide Array of Colors • No Rinsing Needed • May Contribute to LEED Credits

Inspection

Concrete must be clean, dry and free of grease, paint, oil, dust, curing agents, laitance or any foreign material that will prevent proper adhesion. The concrete should be at least 2,500 PSI, porous and able to absorb water. A minimum of 28 days curing time is required on all concrete. Prior to starting work, test existing concrete slab for efflorescence, moisture and hydrostatic pressure.

DISCLAIMER: PURCHASER'S SOLE AND EXCLUSIVE REMEDY AGAINST THE MANUFACTURER OF WESTCOAT, SHALL BE LIMITED SOLELY TO THE REPLACEMENT OF ANY DEFECTIVE MATERIAL OR A PAYMENT BY THE MANUFACTURER IN AN AMOUNT EQUAL TO THE COST OF THE ORIGINAL MATERIAL.



westcoat[®]
SPECIALTY COATING SYSTEMS

**SYSTEM
SPECIFICATION**

SC

SURFACE COAT
PROTECTIVE SEALERS & STAINS

Water-Based Stain Grind & Seal

Concrete Patch

Before or after grinding, the concrete can be patched with TC-29 Concrete Patch. In a clean, dry bucket add four parts TC-29 Concrete Patch to one and a half parts water (by Volume) or a ten pound bag to 40-50 ounces of water, depending on the desired consistency. Mix thoroughly for 1-2 minutes with a low rpm drill. Allow 2-4 hours at 72 degrees before grinding. Cracks, spalls, holes and pits should be overfilled and allowed to dry properly. This remedial approach to patch cracks is not guaranteed and it should be noted that when the substrate moves, the crack may reappear. Repaired areas will be visible.

Moisture

All concrete should be tested for moisture before applying a seamless coating. If moisture emissions exceed 5 lbs/1000 square feet (ASTM F1869) or if the relative humidity (RH) exceeds 75% (ASTM F2170), contact the manufacturer before application.

Concrete Repair

For concrete that needs repairs beyond just dormant cracks, TC-23 Mortar Mix can be used. TC-23 is designed to be used as a general concrete repair mix for horizontal and vertical applications and can be used as a patching/underlayment material under most Westcoat systems. Please refer to the TC-23 Mortar Mix Product Specification Sheet for details.

Preparation

Prepare surface by diamond grinding with 60-80 grit tools to achieve a clean, uniform, porous surface that will allow the Water-Based Stain to soak into the concrete. Sweep and vacuum surface entirely. Any dust or contaminants will deter adhesion.

Applying Product

Apply SC-35 using a pump sprayer, airless sprayer, brush or broom. Strain or filter material before pouring into sprayer to avoid clogging. For a mottled effect, use water to pre-dampen the surface before, or in conjunction with the stain. Multiple colors and various amounts of water may be applied at the same time for a variegated finish. Water-Based Stain can be thinned using water, up to equal parts, to effect the depth of the color.

The coverage will vary depending on the surface. Up to 1000 square feet per gallon on a smooth surface and between 600-800 square feet per gallon on rough surfaces. Product performs best if applied in thin even coats. When temperatures are above 80 degrees, it may be necessary to dampen the surface prior to application to prevent material from drying instantly.

Sealer

Mix EC-11 (2 parts A with 1 part B together) thoroughly, in a clean bucket. Mix slowly for at least 3-5 minutes and until completely combined. Only prepare the amount that you can use in 4 hours. You may thin up to 50% with water. EC-11 can be applied by rolling or spraying and backrolling with a $\frac{3}{8}$ inch nap, non-shedding roller cover at a rate of 300-600 square feet per gallon.

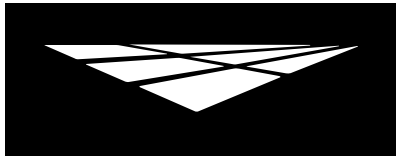
For added slip resistance, add up to 1 quart of CA-30 Safe Grip per 3 gallons of sealer. #30 silica sand may be broadcast when extra traction is needed. Quantities may vary.

DISCLAIMER: PURCHASER'S SOLE AND EXCLUSIVE REMEDY AGAINST THE MANUFACTURER OF WESTCOAT, SHALL BE LIMITED SOLELY TO THE REPLACEMENT OF ANY DEFECTIVE MATERIAL OR A PAYMENT BY THE MANUFACTURER IN AN AMOUNT EQUAL TO THE COST OF THE ORIGINAL MATERIAL.



4007 Lockridge St • San Diego, CA 92102
800-250-4519 • Fax 619-255-7187 • westcoat.com

2 of 4
WB Stain Grind & Seal 11/21



westcoat[®]
SPECIALTY COATING SYSTEMS

**SYSTEM
SPECIFICATION**

SC

SURFACE COAT
PROTECTIVE SEALERS & STAINS

Water-Based Stain Grind & Seal

Sealer Dry Time

When using EC-11, allow 1-4 hours between coats and 12-24 hours before light foot traffic. Normal traffic may be permitted after 24-48 hours. Allow 72 hours before placing heavy objects on the surface.

Clean Up

Uncured material can be removed with soap and warm water. If cured, material can only be removed mechanically.

Optional Materials

Concrete Patch

- TC-29 Concrete Patch can be used to fill cracks, spalls, holes and pits.

Cement Options

- TC-23 Mortar Mix may be used as a general concrete repair mix for horizontal and vertical applications and can be used as a patching/underlayment material.

Sealer Options

- SC-65G WB Gloss Polyurethane Sealer, SC-65F WB Flat Polyurethane Sealer and SC-65SG WB Semi-Gloss Polyurethane Sealer can be used for a low odor, solvent free, mar and chemical resistant sealer.
- EC-32 Clear Epoxy Topcoat can be used in lieu of EC-11 when a 100% solids epoxy topcoat is required.
- EC-95G Gloss Polyurethane Topcoat can be used in lieu of EC-11 when a solvent-based polyurethane is required.
- EC-95F Flat Polyurethane Topcoat can be used over EC-95G Gloss when a low gloss, solvent-based polyurethane topcoat is required.

Skid Resistance

- CA-29 Mini Safe Grip, CA-30 Small Safe Grip or CA-31 Large Safe Grip can be added to the final coat of sealer for added skid resistance.
- CA-33 Aluminum Oxide can be used for skid resistance in heavy traffic areas.

* Please read Product Specification Sheets on these products prior to use. SC-65F WB Flat Polyurethane Sealer has a likelihood of turning white when applied directly over a substrate with moisture. Do not apply over an unsealed surface.

Maintenance

Interior Floors can be dust mopped daily or mopped using a neutral pH cleaner. For more information on floor care and maintenance, please refer to the General Maintenance sheet.

The Water-Based Stain System should be inspected for wear every 2 to 4 years. The system should be resealed with the appropriate Westcoat clear sealer every 3 to 5 years depending upon traffic and UV exposure. Contact the original Installer of Westcoat for complete re-coating instructions.

DISCLAIMER: PURCHASER'S SOLE AND EXCLUSIVE REMEDY AGAINST THE MANUFACTURER OF WESTCOAT, SHALL BE LIMITED SOLELY TO THE REPLACEMENT OF ANY DEFECTIVE MATERIAL OR A PAYMENT BY THE MANUFACTURER IN AN AMOUNT EQUAL TO THE COST OF THE ORIGINAL MATERIAL.



4007 Lockridge St • San Diego, CA 92102
800-250-4519 • Fax 619-255-7187 • westcoat.com

3 of 4
WB Stain Grind & Seal 11/21



westcoat[®]
SPECIALTY COATING SYSTEMS

**SYSTEM
SPECIFICATION**

SC

SURFACE COAT
PROTECTIVE SEALERS & STAINS

Water-Based Stain Grind & Seal

Health Precautions

Inhalation of vapor or mist can cause headache, nausea, irritation of nose, throat and lungs. Prolonged or repeated skin contact can cause slight skin irritation.

Be sure to extinguish all pilot lights and sources of ignition and ventilate the area prior to starting the job. Acetone fumes are **EXTREMELY FLAMMABLE**.

Limitations

- This system is designed for professional use only.
- Read Product Specification Sheets for every product you will be using before beginning the project.
- Do not apply at temperatures below 50°F or above 90°F.
- For interior use only.
- Be sure to paper off any areas that you do not want stained.
- Will not hide imperfections or stains in concrete.
- Product will stain concrete and can produce a mottled look. Colors and effects will vary.
- Water-Based Stain will fade with prolonged exposure to sunlight.
- Sealers will make the surface slippery, please be aware of the existing texture of the concrete and how the sealer will affect the look and feel.
- Approval and verification of proposed colors, textures and slip resistance is recommended.
- Do not allow Westcoat products to freeze.
- Not intended for use in heavy traffic areas or with vehicular traffic.

DISCLAIMER: PURCHASER'S SOLE AND EXCLUSIVE REMEDY AGAINST THE MANUFACTURER OF WESTCOAT, SHALL BE LIMITED SOLELY TO THE REPLACEMENT OF ANY DEFECTIVE MATERIAL OR A PAYMENT BY THE MANUFACTURER IN AN AMOUNT EQUAL TO THE COST OF THE ORIGINAL MATERIAL.



westcoat[®]

4007 Lockridge St • San Diego, CA 92102
800-250-4519 • Fax 619-255-7187 • westcoat.com

4 of 4
WB Stain Grind & Seal 11/21



westcoat®
SPECIALTY COATING SYSTEMS

CSI SPECIFICATION



SECTION 096119

CONCRETE FLOOR STAINING

PART 1 GENERAL

1.01 SUMMARY

- A. Section includes: Provide a complete stained concrete floor system that meet the requirements for specific use indicated in the contract documents. Include all applicable substrate testing, surface preparation, and detail work.

1.02 RELATED SECTIONS

- A. Section 033000 – Cast-In-Place Concrete
- B. Section 099723 – Concrete Sealers and Coatings
- C. Section 030130 – Maintenance of Cast-In-Place Concrete
- D. Section 099723 – Concrete Sealers

1.03 SUBMITTALS

- A. Submit under provisions of Section 013300.
- B. Product Data: Submit manufacturer's product data sheets on each product and system to be used including:
 - 1. Preparation instructions and recommendations.
 - 2. Storage and handling requirements.
 - 3. Installation methods.
 - 4. Maintenance requirements.
- C. Selection Samples: For each system specified, provide two samples, representing manufacturer's full range of colors.

1.04 QUALITY ASSURANCE

- A. All materials used on the stained concrete floor system shall be manufactured and provided by a single manufacturer to ensure compatibility and proper bonding.
- B. Use adequate numbers of skilled workmen thoroughly trained and experienced in the necessary crafts and completely familiar with the specified requirements and methods needed for proper performance of the work of this section.
- C. Contractor shall have a minimum of 3 years experience installing concrete floor coatings similar to that which is required for this project and who is acceptable to the manufacturer.
 - 1. Applicator shall designate a single individual as project foreman who shall be on site at all times during installation.
 - 2. Contractor must show and have QCA Qualified Contractor/Applicator paperwork from the manufacturer of the coating system.
- D. Convene a pre-application meeting before the start of application of coating system. Require attendance of parties directly affecting work of this section, including: Architect, contractor, applicator, and authorized representative of the coating system manufacturer and interfacing trades. Review the following:
 - 1. Drawings and specifications affecting work of this section.
 - 2. Protection of adjacent surfaces.
 - 3. Surface preparation and substrate conditions.

4. Application.
5. Field quality control.
6. Cleaning.
7. Protection of coating system.
8. Repair of coating system.
9. Coordination with other work.

1.05 DELIVERY, STORAGE & HANDLING

- A. Delivery: Materials shall be delivered to the job site in sealed, undamaged containers. Each container shall be clearly marked with manufacturer's label showing type of material, color, and lot number.
- B. Storage: Store all materials in a clean, dry place with a temperature range in accordance with manufacturer's instructions
- C. Handling: Handle products carefully to avoid damage to the containers. Read all labels and Material Safety Data Sheets prior to use.

1.06 PROJECT SITE CONDITIONS

- A. Maintain environmental conditions (temperature, humidity, and ventilation) within the limits recommended by the manufacturer.
- B. Schedule coating work to avoid excessive dust and airborne contaminants. Protect work areas from excessive dust and airborne contaminants during coating application.
- C. All concrete should be tested for moisture before applying a seamless coating. If moisture emissions exceed 5 lbs/1000 square feet (ASTM F1869) or if the relative humidity (RH) exceeds 75% (ASTM F2170), contact the manufacturer before application.
- D. Concrete must be at least 2500 psi.
- E. Concrete must be cured for a minimum of 28 days before coating is applied
- F. Before any work is started, the applicator shall examine all surfaces for any deficiencies. Should any deficiencies exist, the architect, owner or general contractor shall be notified in writing and any corrections necessary shall be made.

PART 2 PRODUCTS

2.01 MANUFACTURERS

- A. Acceptable manufacturer: Westcoat Specialty Coatings; 4007 Lockridge Street, San Diego, CA 92102. Telephone 800-250-4519. Fax 619-255-7187. Website: www.westcoat.com.

2.02 MATERIALS

- A. As basis of design Westcoat Water-Based Stain Grind and Seal System (no substitutions will be accepted): A process of grinding interior concrete and applying water based stain and sealer.

2.03 COMPONENTS

- A. Water-Based Stain Grind and Seal System: Water-Based concrete stain and seal.
 1. Stain: SC-35 Water-Based Stain 150-400 square feet per gallon. Repeat staining as needed to achieve desired color.
 2. Sealer: EC-11 Water-Based Epoxy 600-1000 square feet per gallon.

2.04 ACCESSORIES

- A. Supplemental Materials:
 1. Patching materials shall be TC-29 Concrete Patch
 2. Concrete repairs can be made with TC-23 Mortar Mix as needed.
 3. Optional aggregate shall be CA-30 Small Safe Grip, CA-31 Large Safe Grip, or other sand designed to meet the owners skid resistance requirements.

Optional Topcoats:

4. EC-32 High Build Clear Epoxy Topcoat may be used IN LIEU of the EC-11, when a two-component, 100% solids, high-build, chemical resistant epoxy is required.
5. SC-65G WB Gloss Polyurethane may be used IN LIEU of the EC-11. It may also be applied over the EC-11 or EC-32 when a low odor, solvent free, mar and chemical/UV resistant gloss finish is required.
6. SC-65SG WB Semi-Gloss Polyurethane may be used IN LIEU of EC-11. It may also be applied over the EC-11 or EC-32 when a low odor, solvent free, mar and chemical/UV resistant semi-gloss finish is required.
7. SC-65F WB Flat Polyurethane may be applied OVER the EC-11, EC-32, SC-65G Gloss or SC-65SG Semi- Gloss when a low odor, solvent free, mar and chemical/UV resistant flat finish is required.
8. EC-95G Gloss Polyurethane may be used IN LIEU of the EC-11. It may also be applied over the EC-32 when a chemical/UV resistant, solvent-based gloss finish is required.
9. EC-95F Flat Polyurethane may be applied OVER the EC-32 or EC-95G when a chemical/UV resistant, solvent-based flat finish is required.

PART 3 EXECUTION

3.01 EXAMINATION

- A. Verification of Conditions.
 1. Inspect all surfaces to receive stained concrete flooring. Concrete must be clean, dry and free of grease, paint, oil, dust, curing agents, laitance or any foreign material that will prevent proper adhesion.
 2. Before starting work, report in writing to the authority having jurisdiction any unsatisfactory conditions.

3.02 SURFACE PREPARATION

- A. Prepare surfaces using methods recommended by the manufacturer for achieving the best result for the substrate under the project conditions.
- B. Create a surface profile by mechanically diamond grinding the surface with 60-80 grit tools to achieve a clean uniform surface. Additional tooling and passes may be required.
- C. Sweep and vacuum surfaces entirely prior to installation.
- D. Rout and clean moving cracks and joints: patch with manufacturer's recommended concrete patch material.
- E. Repair any non-moving surface deviations with manufacturer's recommended patching material.

3.03 INSTALLATION

- A. Install coatings in accordance with manufacturer's instructions.
- B. Mix multi-component materials in accordance with manufacturer's instructions.
- C. Use application equipment, tools, and techniques in accordance with manufacturer's instructions.
- D. Uniformly apply coatings at spread rates and in number of coats to achieve specified coverage rates recommended by the manufacturer.
- E. Broadcast aggregates in accordance with the specified system and manufacturer's instructions.
- F. Adhere to all limitations, instructions, and cautions for stained concrete floor coating as stated in the manufacturer's published literature.

3.04 FIELD QUALITY CONTROL

- A. Verify coatings and other materials are as specified.
- B. Verify coverages of the system as work progresses. Areas found not to meet the required coverage rates shall receive additional material until specified coverage is attained.

- C. Manufacturer's representative shall provide technical assistance and guidance for surface preparation and application of coating systems.

3.05 PROTECTION AND CLEAN-UP

- A. Installation areas must be kept free from traffic and other trades during the application procedure and cure time.
- B. Protect finished surfaces of coating system from damage during construction.
- C. Touch-up, repair or replace damaged flooring system after substantial completion.
- D. Clean area and remove all debris upon completion of work. Dispose of empty containers properly according to current Local, State and Federal regulations.

3.06 MAINTENANCE

- A. Contractor shall provide to owner, maintenance and cleaning instructions for the floor system upon completion of work. Owner is required to clean and maintain the surfaces to maintain manufacture's warranty.

END OF SECTION

This guide specification has been prepared by Westcoat Specialty Coating Systems to assist design professionals in developing a project specific specification. This guide is a template that must be reviewed and adapted by specifiers to comply with project requirements. This guide specification is not to be copied directly into a project specification manual without review.



westcoat®
SPECIALTY COATING SYSTEMS

COLOR CHART



Water-Based Stains have been applied over TC-4 Fine Texture Cement



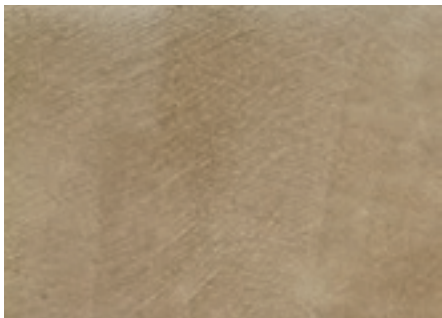
Shale | 516



Armor | 514



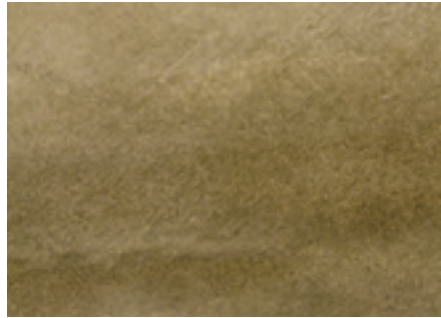
Onyx | 509



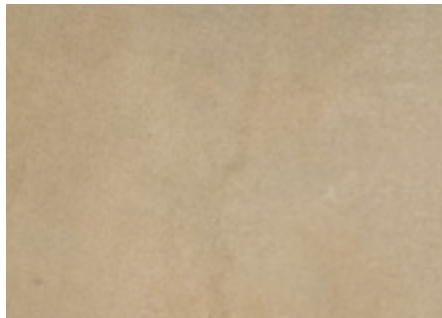
Umber | 521



Camel | 505



Olive | 520



Sahara | 518



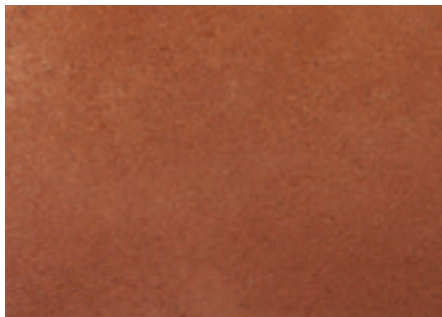
Sienna | 513



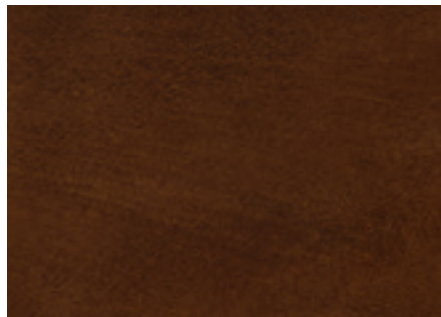
Sepia | 511



Copper | 508



Adobe | 515



Mahogany | 501

Not shown but also available in Ivory | 517



CAUTION:

Color will vary between products and sheens. This chart is for reference only. Please request an actual color sample and apply sample on site before beginning any project.





westcoat®
SPECIALTY COATING SYSTEMS

SAMPLE WARRANTY



WARRANTY

WESTCOAT WATER-BASED STAIN SYSTEM WARRANTY

Subject to the conditions, limitations and requirements set forth below, Westcoat warrants the Westcoat Water-based Stain materials to be free of defects in the material for a period of one (1) year from the date of original purchase of the materials provided that the materials are installed by a factory trained state-licensed contractor enrolled in the Westcoat QCA program and subject to all terms and conditions set forth below. Westcoat disclaims any warranty for the labor or installation of the Water-based Stain materials.

If the Westcoat Water-based Stain materials fail due to defects within the warranty period, Westcoat, in its sole discretion, will either provide replacement materials for the defective Water-based Stain materials or reimburse the original purchaser in an amount not to exceed the original cost of the materials. Westcoat shall in no way be responsible or liable for any labor costs or any incidental or consequential damages, including without limitation, economic losses, lost profits, business interruption, loss of use, contribution, indemnity or other losses arising from the use of the Water-based Stain materials.

This warranty is limited to the original purchases and is non-transferable. This warranty is void if the Water-Based Stain materials are: not properly maintained; not installed pursuant to the current system information sheet; and/or applied at any area that is not built in accordance with applicable building codes. The warranty is also void if all of the materials are not purchased from an authorized distributor of Westcoat.

This warranty does not apply to and Westcoat has no responsibility or liability for: (1) the condition or movement of the substrate; (2) moisture rising from substrate and/or efflorescence; (3) the loss of gloss, fading or cleaning; (4) repairs and/or maintenance of the sealer and texture coat (5) waterproofing of any sort; (6) abuse or misuse of the materials; or (7) improper installation; or (8) surfaces less than 2500 psi concrete.

THIS MATERIAL WARRANTY AND THE REMEDIES PROVIDED HEREUNDER ARE EXCLUSIVE AND GIVEN IN LIEU OF ALL OTHER WARRANTIES (WHETHER WRITTEN, ORAL, IMPLIED OR STATUTORY). THERE ARE NO OTHER WARRANTIES, EITHER EXPRESSED OR IMPLIED, INCLUDING BUT NOT LIMITED TO, WARRANTIES OF MERCHANTABILITY AND FITNESS FOR A PARTICULAR PURPOSE, THAT EXTEND BEYOND THAT SPECIFICALLY DESCRIBED HEREIN. PURCHASER'S SOLE AND EXCLUSIVE REMEDY AGAINST THE MANUFACTURERS OF WESTCOAT, INCLUDING CLAIMS BASED UPON THE MANUFACTURER'S NEGLIGENCE OR STRICT LIABILITY, SHALL BE LIMITED SOLELY TO THE REPLACEMENT OF ANY DEFECTIVE WATER-BASED STAIN MATERIAL OR A PAYMENT BY THE MANUFACTURER IN AN AMOUNT EQUAL TO THE COST OF THE ORIGINAL WATER-BASED STAIN MATERIAL.

The Westcoat Water-based Stain system requires a maintenance topcoat specified by a factory representative, every two to four years (depending on ultraviolet exposure and/or traffic) as determined by a Westcoat QCA OR authorized inspector. Inspections are required one year after installation and every two years thereafter by a Westcoat QCA or an authorized inspector. The record of the inspection must be kept in writing and entitlement to the benefits of this warranty require the purchaser to show proof of purchase of the materials and the record of inspection(s).

All claims arising from any defect in the Water-based Stain materials or under this Warranty shall be made, in writing, to Westcoat within ninety (90) days of the discovery of the alleged defect and within the time period of this warranty. Upon notification, Westcoat shall have the right to inspect and determine course of repair. The absence of a written claim within this time period shall constitute a waiver of all claims, rights and damages against Westcoat, and its affiliates. This warranty shall not toll or extend any statute of limitation applicable to a claim of negligence, breach of contract or strict liability against Westcoat.

Any and all disputes, claims or damages arising out of the use of Water-based Stain materials or this Warranty shall be arbitrated in the County of San Diego, State of California, utilizing the services of a neutral dispute resolution service upon which the purchaser and Westcoat agree, or if they cannot agree, utilizing the services of the American Arbitration Association. The purchaser and Westcoat hereby waive any right they may have to have a jury decide any dispute.



westcoat

4007 Lockridge Street San Diego, CA 92102
800•250•4519 • Fax 619•262•8606 • westcoat.com



westcoat®
SPECIALTY COATING SYSTEMS

GENERAL MAINTENANCE



INTERIOR COATINGS

Westcoat interior coating systems (including systems such as Thin Film, Grind and Seal, Dubro Quartz, etc.) offer durable, high-performance, long lasting surfaces that are designed to provide years of service against normal wear and usage. Seamless flooring allows for greater ease of cleaning, compared to traditional resilient flooring, due to the absence of cracks, seams, and crevices that can trap dirt and contaminants. To extend the service life of your Westcoat system, it is recommended to implement a routine cleaning regimen and have periodic inspections. This information is a basic guideline only.

Routine Cleaning

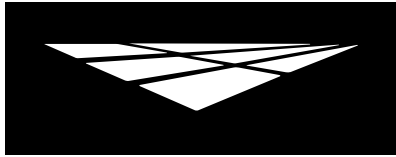
All coating systems require maintenance and upkeep to ensure continued performance and to maximize the life of the system. Maintenance methods may vary depending on the system, texture, topcoat or sealer, environment conditions, slope, drainage, volume and type of traffic, and use of space.

Ensure that the coating surface is free from debris, such as sand, gravel, metals, or other abrasives that can result in premature wear of the topcoat or sealer. Grease, oils, and other contaminants should be removed promptly to maintain the surface. Establish a routine maintenance schedule for all flooring systems. Be sure to test all cleaning agents in an unnoticeable area to ensure compatibility. Refer to the manufacturer's instructions and dilution rates for all cleaning agents. Routine cleaning can be achieved by using a mild cleaning solution, such as "Simple Green", neutral pH detergent, or soap. Be sure to use clean mops and change out cleaning solution regularly. Utilize a brush, broom, or mechanical scrubber to help agitate and loosen up dirt and debris, especially on textured floors. Ensure that the surface is rinsed with clean water thoroughly. Do not allow cleaning agents to dry on the surface. Buildup of residue or other foreign elements can make cleaning more difficult and can also negatively affect the slip-resistance of the surface.

Floor auto-scrubbing machines can be used for larger areas. Avoid using abrasive pads or brushes and use long, soft brushes. Do not allow buildup of residue or other foreign materials, as this can result in a surface that is slippery when wet. Do not use metal-based or coarse brushes, as they may damage the surface.

Wax and Floor Finishes

Westcoat interior coating systems do not typically require a wax or a floor finish material. That said, in some cases where heavy traffic is present or where you may desire to enhance the finish, a standard, commercial floor finish that is intended for use with resinous materials can be applied. Prior to application, ensure that the surface is clean and free from any debris or wax. Apply and



westcoat[®]
SPECIALTY COATING SYSTEMS

**CARE &
MAINTENANCE**

INTERIOR COATINGS

maintain wax or floor finish per the manufacturer 's guidelines. Wax or floor finishes will need to be completely removed prior to reseal application.

Maintenance and Inspections

All interior coating systems should be periodically inspected and regularly maintained by a Westcoat Qualified Contractor Applicator (QCA). Inspections are required one year after installation and every two years thereafter by a factory authorized representative. After 3-5 years, a "reseal" (thorough cleaning and reapplication of Westcoat topcoat/sealer) may be required. Existing sealer or coating should be abraded and wiped with solvent before application of topcoat or sealer. Some topcoats and sealers may require additional preparation prior to recoating. Should damage occur, be sure to contact the original Westcoat applicator to inspect and repair the coating system immediately.

Best Practices

- Do not expose the coating surface to traffic, moisture, or chemical agents until system is fully cured.
- Immediately clean up and rinse off any chemical solutions that may stain or damage the surface.
- Do not subject the floor coating system to chemicals that it is not compatible or resistant to.
- Avoid dragging metal, concrete, pallets, or other types of objects with sharp edges across the floor.
- Rolling loads with steel casters can potentially damage the surface and should be avoided.
- Avoid ponding or standing water by ensuring that positive drainage is present before applying the floor coating system.
- Water should not be allowed to enter the flooring system through penetrations, joints, or edges.
- Furniture should have protective coasters or pads to prevent from indentations or damage.
- Tape and other adhesives should not be applied to finished floors as, this may damage the surface.

Any information provided by Westcoat Specialty Coating Systems is for general purposes only. Nothing presented by Westcoat Specialty Coating Systems constitutes design advice or a recommendation specific to a particular situation. Westcoat Specialty Coating Systems directs you to consult with the appropriate qualified design professional to ensure any product or information meets the requirements for the specific intended use, and complies with all building plans, specifications, codes or regulations. Westcoat Specialty Coating Systems expressly and specifically disclaims responsibility for any damages arising from the use of any information, and each recipient of this information agrees that there is no express or implied warranty, including any implied warranty of merchantability or fitness for a particular purpose, arising from any information provided by Westcoat Specialty Coating Systems.



westcoat[®]

4007 Lockridge St • San Diego, CA 92102
800-250-4519 • Fax 619-255-7187 • westcoat.com

2 of 2
General Maintenance INT 8/22