

westcoat®
SPECIALTY COATING SYSTEMS

TEXTURE-CRETE® WOOD FINISH

TC **TEXTURE COAT**
DECORATIVE TEXTURED SURFACES



westcoat[®]
SPECIALTY COATING SYSTEMS

TEXTURE-CRETE WOOD FINISH SUBMITTAL PACKAGE

DIVISION 9 – FINISHES
SECTION 09 97 26 CEMENTITIOUS COATINGS

TABLE OF CONTENTS

System Brochure	3-5
System Specification Sheet	6-11
CSI Specification	12-17
Color Charts	18-22
Sample Warranty	23-24
General Maintenance	25-27



westcoat®
SPECIALTY COATING SYSTEMS

SYSTEM BROCHURE



ABOUT TEXTURE-CRETE:

Beautify existing concrete with Texture-Crete®, a series of polymer modified cementitious coatings designed to resurface concrete. Plain concrete is transformed into a durable finish that can be smooth or textured and simulate patterns like tile, flagstone or slate. This microtopping surface can be sealed with a diverse array of UV resistant Westcoat sealers in gloss, semi-gloss or flat finishes. Imperfect concrete becomes completely restored at a much lower cost than removal and replacement.



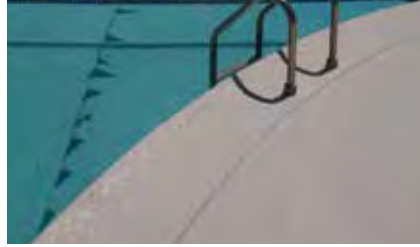
**ADD TEXTURE.
ADD DIMENSION.**

- Cost Effective
- Fast Drying / Long Lasting
- Low Maintenance
- Skid Resistant Finish Available
- Unlimited Color and Texture Options
- Can be Installed Solvent Free
- Interior or Exterior



FOR PROFESSIONAL USE ONLY.





STANDARD SYSTEM

Texture-Crete® Standard is a series of cementitious coatings created to bond to existing concrete in need of resurfacing. This cost-effective system is skid resistant and easy to maintain making it a great choice for multi-family and commercial properties. Texture-Crete Standard Finish is a knockdown texture followed by SC-10 Acrylic Topcoat.



Primer Slurry Knockdown Color and Seal Texture

CUSTOM FINISH

Texture-Crete® Custom Finish is a more decorative option that can be tailored to a more sophisticated design aesthetic. Whether smooth or subtly textured, patterns like tile and flagstone are enhanced by artistically merged colors. This finish can be achieved with Water-Based Stain Blends and clear sealer.



Primer Slurry Skip Trowel Stain and Seal Texture

BROOM ON

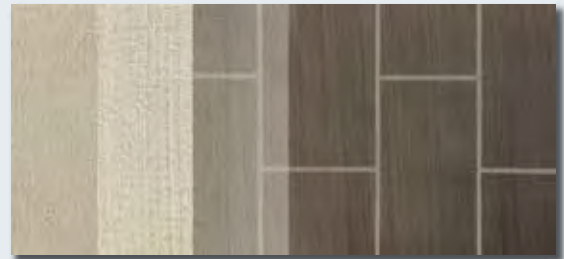
Texture-Crete® Broom-On is perfect for restoring concrete to its original look. This finish is achieved with a broom versus a trowel or other cement finishing tool. Perfect for sidewalks or anywhere a fast drying, subtle concrete look is desired.



Primer Slurry Broom Coat Sealer

WOOD FINISH

Texture-Crete® Wood Finish is a decorative topping process created to produce the look of traditional decking finishes. Using Westcoat's TC-40 Integral Color and Water-Based Stains concrete artisan's can create patterns resembling cedar, redwood or any wood-like pattern desired.



Primer Slurry Tape and Stain and Seal Wood Grain



HAVE A QUESTION? GET IN TOUCH:

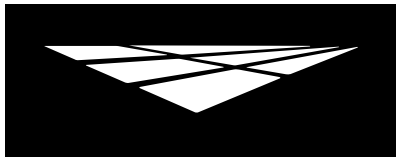
westcoat.com / 800.250.4519 / info@westcoat.com

4007 Lockridge Street, San Diego, CA 92102, USA.



westcoat®
SPECIALTY COATING SYSTEMS

SYSTEM SPECIFICATION SHEET



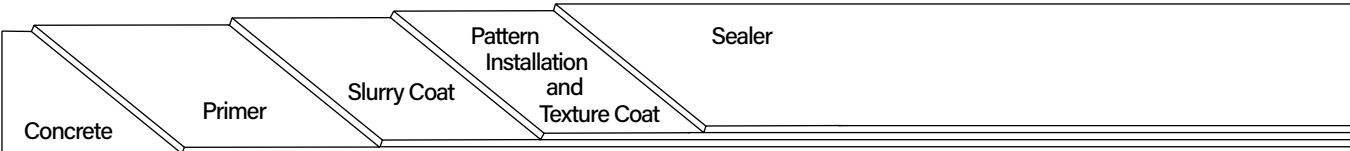
Description

Texture-Crete[®] Wood Finish is a series of polymer-modified cementitious coatings that are bonded to the concrete with a variety of optional finishes and sealers. Texture-Crete[®] Wood Finish is a decorative topping designed to change plain concrete into a very decorative, durable and textured finish. Texture-Crete[®] Wood Finish can produce the look of traditional decking finishes, like cedar, redwood or composite.

Uses

Texture-Crete[®] Wood Finish was created to resurface concrete that is aesthetically unattractive. Some uses include driveways, walkways, patios, garage floors, courtyards, entryways, showrooms and pool decks. Texture-Crete[®] Wood Finish can be installed in both the commercial and residential environment.

System Overview



System Data					
Coverages	Primer 250-350 ft ² per gallon	Slurry Coat 150-200 ft ² per batch	Texture Coat 150-200 ft ² per batch	WB Stain 150-400 ft ² per gallon	Sealer 200-300 ft ² per gallon
Components	WP-47A Seam Tape EC-76 Cove Gel EC-11 Water-Based Epoxy WP-81 Cement Modifier TC-2 Smooth Texture Cement TC-40 Liquid Colorant CA-60 Grout Tape SC-35 Water-Based Stain SC-70 Acrylic Lacquer Sealer			Shelf Life 1 year 2 years 3 years 2 years 1 year 1 year 1 year 2 years 5 years	

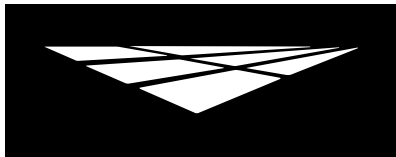
Advantages

- Cost Effective
- Fast Drying
- Low Maintenance
- Long Lasting
- Skid Resistant Finish Available
- Unlimited Colors
- Exterior Applications
- Can be Installed Solvent Free
- Variety of Textures and Patterns

Inspection

Concrete must be clean, dry and free of grease, paint, oil, dust, curing agents, laitance or any foreign material that will prevent proper adhesion. The concrete should be at least 2,500 PSI, porous and able to absorb water. A minimum of 28 days curing time is required on all concrete. Prior to starting work, test existing concrete slab for efflorescence, moisture and hydrostatic pressure.

DISCLAIMER: PURCHASER'S SOLE AND EXCLUSIVE REMEDY AGAINST THE MANUFACTURER OF WESTCOAT, SHALL BE LIMITED SOLELY TO THE REPLACEMENT OF ANY DEFECTIVE MATERIAL OR A PAYMENT BY THE MANUFACTURER IN AN AMOUNT EQUAL TO THE COST OF THE ORIGINAL MATERIAL.



westcoat[®]
SPECIALTY COATING SYSTEMS

**SYSTEM
SPECIFICATION**

TC

TEXTURE COAT
DECORATIVE TEXTURED SURFACES

Texture-Crete[®]

Wood Finish

Moisture

All concrete should be tested for moisture before applying a seamless coating. If moisture emissions exceed 4% by weight using a concrete moisture meter (ASTM F2659) or if the relative humidity (RH) exceeds 75% (ASTM F2170), please refer to the EC-15 Moisture Vapor Barrier Product Specification Sheet.

Preparation

Pre-cut and clean all cracks and joints with a concrete diamond blade to at least ¼ x ¼ inch. Prepare concrete to a profile equal to CSP 3 as specified by ICRI. Methods may vary according to the thickness of the coating to be applied and the condition and hardness of the concrete. Other factors include the forecasted use of the surface and the environment in which it is to be installed. When preparing the surface, use caution when shot blasting around pools, scarifying too aggressively, leaving grind marks or grinding too smooth.

Crack Treatment

Fill cracks with EC-76 Cove Gel. WP-47A Seam Tape may also be used to help reinforce, in which case the EC-76 should be placed into the tape and smoothed with a trowel or putty knife. Broadcast fine silica onto the wet epoxy to provide a surface for the Texture-Crete[®] to bond. EC-76 should be allowed to dry completely prior to the primer application.

For additional reinforcement, place WP-47H Fiberlath Heavy Duty over the dry EC-76. Mix four gallons of WP-90 Waterproofing Resin with one bag TC-5 Grout Texture Cement and trowel into the WP-47H. This is a remedial approach to patch cracks and there is no guarantee that cracks will not reappear.

Concrete Repair

For concrete that needs repairs beyond just dormant cracks, TC-23 Mortar Mix can be used. TC-23 is designed to be used as a general concrete repair mix for horizontal and vertical applications and can be used as a patching/underlayment material under most Westcoat systems. Please refer to the TC-23 Mortar Mix Product Specification Sheet for details.

Primer

Premix each component separately. In a clean bucket, mix 2 parts A with 1 part B (by volume) of EC-11. Mix thoroughly with a low speed (400-600 rpm) drill motor for 3-4 minutes. Make sure to scrape the sides and bottom of the container during mixing. EC-11 can be thinned with water, up to 50%. After mixing, dip and roll or spray and back roll the EC-11 onto the surface at a rate of 250-350 square feet per gallon. Do not allow material to puddle. Allow EC-11 to become tacky and trowel slurry coat into tacky primer. Do not let the primer dry and shell over, as this may prevent the slurry coat from properly adhering. Alternatively, you can roll the EC-11. Immediately broadcast 30 grit silica sand to refusal and allow the EC-11 to dry (1-4 hours at 70F degrees). Remove all loose sand prior to installing the slurry coat.

Slurry Coat

Create the slurry coat by adding one bag of TC-2 Smooth Texture Cement with TC-40 Liquid Colorant of choice and one gallon of WP-81 Cement Modifier and up to ½ gallon of water into a clean mixing bucket. Mix until uniform with a mechanical mixer at a low rpm. Trowel the slurry mix into the damp primer over the surface to achieve a smooth finish. Each batch will cover 150-200 square feet. For best results, allow the Slurry Coat to dry overnight, prior to Pattern Installation.

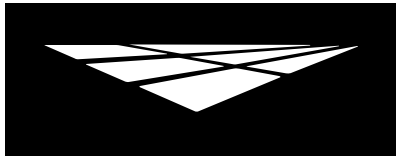
DISCLAIMER: PURCHASER'S SOLE AND EXCLUSIVE REMEDY AGAINST THE MANUFACTURER OF WESTCOAT, SHALL BE LIMITED SOLELY TO THE REPLACEMENT OF ANY DEFECTIVE MATERIAL OR A PAYMENT BY THE MANUFACTURER IN AN AMOUNT EQUAL TO THE COST OF THE ORIGINAL MATERIAL.



westcoat[®]

4007 Lockridge St • San Diego, CA 92102
800-250-4519 • Fax 619-255-7187 • westcoat.com

2 of 5
Texture-Crete[®] Wood Finish 3/24



westcoat[®]
SPECIALTY COATING SYSTEMS

**SYSTEM
SPECIFICATION**

TC

TEXTURE COAT
DECORATIVE TEXTURED SURFACES

Texture-Crete[®]

Wood Finish

Pattern Installation

Decking or wood plank patterns can be achieved by applying CA-60 Grout Tape. The board or plank size and spacing can be varied from job to job, to give each installation a custom look. The best way to create a straight line is to pre-measure and mark your lines using a chalk box with white chalk. Place your Grout Tape on the outside edge of the chalk line, so the chalk line will be covered by the texture.

Texture Coat

Create a slurry coat by pouring $\frac{3}{4}$ gallons of WP-81 Cement Modifier and $\frac{3}{4}$ gallons of water in a clean mixing bucket and add one bag of TC-2 Smooth Texture Cement. Mix thoroughly with a mechanical mixer at a low rpm. Add desired TC-40 Liquid Colorant to the mix. Trowel the slurry mix over the surface to achieve a smooth finish. Each batch will cover 150-200 square feet. Once the slurry coat is dry, you may apply the texture.

To create the texture, pour $\frac{3}{4}$ gallons of WP-81 Cement Modifier and $\frac{3}{4}$ gallons of water in a clean mixing bucket and add one bag of TC-2 Smooth Texture Cement. Mix thoroughly with a mechanical mixer at a low rpm. Add desired TC-40 Liquid Colorant to the mix. Be sure to carefully rinse the container to remove all the colorant. Make sure to use the exact same amount of water and colorant for each mix and combine completely to maintain consistent color and texture.

Pour the mix onto the surface and squeegee or trowel at a rate of approximately 150-200 square feet per batch. Using a broom or brush, immediately broom through the material, leaving the desired wood grain finish. Wood knots and other elements can be carved, stamped or tooled into the Texture Coat as desired.

After the texture has hardened enough to walk on, scrape and/or slightly sand the surface to even out the look and feel of the texture. Be careful to sand or buff consistently and to not damage the texture. Vacuum any cement dust and debris. If CA-60 Grout Tape was applied, you may elect to remove the tape before you proceed to coloring options.

WB Stain

Apply SC-35 using a pump sprayer, airless sprayer, HVLP sprayer, brush or broom. For a mottled effect, use water to pre-dampen the surface before, or in conjunction with the stain. Multiple colors and various amounts of water may be applied at the same time for a variegated finish. SC-35 can be applied in multiple coats to achieve a solid color. Water-Based Stain can be thinned using water, up to equal parts. Thinning will affect the depth of color and may require extra coats.

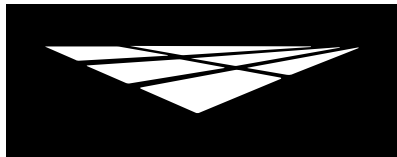
The coverage will vary depending on the surface. Up to 400 square feet per gallon on a smooth surface and between 150-250 square feet on rough surfaces. Product performs best if applied in thin, even coats. When temperatures are above 80 degrees, it may be necessary to dampen the surface prior to application to prevent material from drying instantly.

DISCLAIMER: PURCHASER'S SOLE AND EXCLUSIVE REMEDY AGAINST THE MANUFACTURER OF WESTCOAT, SHALL BE LIMITED SOLELY TO THE REPLACEMENT OF ANY DEFECTIVE MATERIAL OR A PAYMENT BY THE MANUFACTURER IN AN AMOUNT EQUAL TO THE COST OF THE ORIGINAL MATERIAL.



4007 Lockridge St • San Diego, CA 92102
800-250-4519 • Fax 619-255-7187 • westcoat.com

3 of 5
Texture-Crete[®] Wood Finish 3/24



westcoat[®]
SPECIALTY COATING SYSTEMS

**SYSTEM
SPECIFICATION**

TC

TEXTURE COAT
DECORATIVE TEXTURED SURFACES

Texture-Crete[®]

Wood Finish

Sealer

SC-70 Acrylic Lacquer Sealer can be sprayed, brushed or rolled. If rolled, neatly cut-in all edges with a brush and roll the center using a good quality roller cover. Be sure to spread evenly in a "V" pattern rolling in both directions. Roll product as thin as possible at a rate of approximately 200-300 square feet per gallon. For a longer working time, SC-70 may be thinned up to 25% with CA-23 ThinCoat Medium Solvent.

Sealer Dry Time

You may re-coat as soon as the surface is dry to the touch in 1 to 4 hours, but no later than 24 hours. Light foot traffic may be permitted in 6 hours, normal traffic in 24 hours and vehicle traffic in 72 hours. All times are based on average temperature of 70 degrees and 50% humidity. Cooler temperatures will increase drying time.

Optional Materials

Patching

- TC-30 Slope Mix can be used to patch and fill holes in concrete under the Texture-Crete System. Please read the TC Slope & Patch System Specification for details.

Primer

- WP-81 Cement Modifier diluted one part to four parts water, can be used in lieu of EC-11, when a cost-effective, acrylic primer is desired.
- EC-12 Epoxy Primer can be used in lieu of EC-11, when maximum adhesion and 100% solids epoxy is desired. When using EC-12, apply at 200-300 square feet per gallon and broadcast 30 grit silica sand to refusal.

Cement Options

- TC-23 Mortar Mix may be used as a general concrete repair mix for horizontal and vertical applications and can be used as a patching/underlayment material.
- TC-5 may be used in place of TC-2 for the Texture Coat, to achieve the color desired or for a heavier, non-skid texture.
- CA-16 Cement Decelerator can be added to the TC-2 to increase the working time.

Sealer Options

- CA-23 ThinCoat Medium Solvent may be added to the SC-70 to provide a longer working time.
- SC-70F can be used when a natural look, acrylic lacquer finish is required.
- For textures requiring a more natural look, apply SC-42 WB Hybrid Acrylic Sealer in lieu of SC-70 Sealer.
- For a low odor, solvent free, mar and chemical resistant sealer option, replace SC-70 Sealer with SC-65G WB Gloss Polyurethane Sealer, SC-65F WB Flat Polyurethane Sealer or SC-65SG WB Semi-Gloss Polyurethane Sealer.

Skid Resistance

- CA-30 Small Safe Grip or CA-31 Large Safe Grip can be added to the final coat of Sealer for added skid resistance.

* Please refer to Product and System Specification Sheets for additional information.

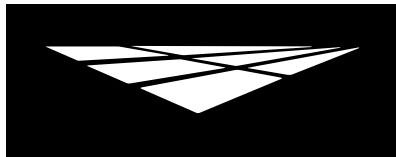
DISCLAIMER: PURCHASER'S SOLE AND EXCLUSIVE REMEDY AGAINST THE MANUFACTURER OF WESTCOAT, SHALL BE LIMITED SOLELY TO THE REPLACEMENT OF ANY DEFECTIVE MATERIAL OR A PAYMENT BY THE MANUFACTURER IN AN AMOUNT EQUAL TO THE COST OF THE ORIGINAL MATERIAL.



westcoat[®]

4007 Lockridge St • San Diego, CA 92102
800-250-4519 • Fax 619-255-7187 • westcoat.com

4 of 5
Texture-Crete[®] Wood Finish 3/24



westcoat[®]
SPECIALTY COATING SYSTEMS

**SYSTEM
SPECIFICATION**

TC

TEXTURE COAT
DECORATIVE TEXTURED SURFACES

Texture-Crete[®]

Wood Finish

Clean Up

Uncured material can be removed with soap and warm water. If cured, material can be removed mechanically or with an environmentally-safe solvent.

Maintenance

Exterior surfaces can be swept daily with water and a broom. For tougher dirt or grease, use degreaser diluted with water 20:1 and a soft bristle brush or broom. Be sure to rinse well. To remove calcium or lime build up, brush diluted 100 grain vinegar onto the surface; be sure to rinse any residue.

The Texture-Crete[®] System should be inspected for wear every 2 to 4 years. The system should be resealed with the appropriate Westcoat clear sealer every 3 to 5 years depending upon traffic and UV exposure. Contact the original installer of Westcoat for complete re-coating instructions.

Health Precautions

Inhalation of vapor or mist can cause headache, nausea, irritation of nose, throat and lungs. Prolonged or repeated skin contact can cause slight skin irritation. Cements contain silicas; dust mask or respirator should be used when mixing, sanding or grinding.

If using solvent based products, they are extremely flammable. Extinguish all pilot lights and sources of ignition such as electrical motors. Be sure to have adequate cross ventilation prior to installing.

Limitations

- This system is designed for professional use only.
- Read Product Specification Sheets for every product you will be using before beginning the project.
- Do not apply at temperatures below 50°F or above 90°F.
- Rain will wash away uncured Westcoat acrylic products.
- If inclement weather threatens, cover deck to protect new application.
- Sealers will make the surface slippery, please be aware the texture of the surface and how the sealer will affect the look, feel and skid resistance.
- Approval and verification of proposed colors, textures and slip resistance is recommended.
- Do not allow Westcoat products to freeze.

Slip Precaution

Westcoat Specialty Coatings Systems highly recommends the use of a slip-resistant additive to all coatings/systems that may be exposed to wet, oily, greasy or slippery conditions. It is the end user's responsibility to provide a flooring system that meets current safety standards. Westcoat and its distributors will not be responsible for injury incurred during a slip and fall incident. For the current coefficient of friction requirements, please consult your local building codes.

DISCLAIMER: PURCHASER'S SOLE AND EXCLUSIVE REMEDY AGAINST THE MANUFACTURER OF WESTCOAT, SHALL BE LIMITED SOLELY TO THE REPLACEMENT OF ANY DEFECTIVE MATERIAL OR A PAYMENT BY THE MANUFACTURER IN AN AMOUNT EQUAL TO THE COST OF THE ORIGINAL MATERIAL.



4007 Lockridge St • San Diego, CA 92102
800-250-4519 • Fax 619-255-7187 • westcoat.com

5 of 5
Texture-Crete[®] Wood Finish 3/24



westcoat®
SPECIALTY COATING SYSTEMS

CSI SPECIFICATION



SECTION 099726

CEMENTITIOUS COATINGS

PART 1 GENERAL

1.01 SUMMARY

- A. Section includes: Provide a complete acrylic based cementitious coating system for concrete surfaces that meet the requirements for specific use indicated in the contract documents. Include all applicable substrate testing, surface preparation, and detail work.

1.02 RELATED SECTIONS

- A. Section 033000 – Cast-In-Place Concrete
- B. Section 090000 – Finishes

1.03 SUBMITTALS

- A. Submit under provisions of Section 013300.
- B. Product Data: Submit manufacturer's product data sheets on each product and system to be used including:
 - 1. Preparation instructions and recommendations.
 - 2. Storage and handling requirements.
 - 3. Installation methods.
 - 4. Maintenance requirements.
- C. Selection Samples: For each system specified, provide two sets of samples and color charts, representing manufacturer's full range of colors and patterns.

1.04 QUALITY ASSURANCE

- A. All materials used in the cementitious coating system shall be manufactured and provided by a single manufacturer to ensure compatibility and proper bonding.
- B. Use adequate numbers of skilled workmen that are thoroughly trained and experienced in the necessary crafts and completely familiar with the specified requirements and methods needed for proper performance of the work of this section.
- C. Contractor shall have a minimum of three years experience installing cementitious coatings similar to that which is required for this project and who is acceptable to the manufacturer.
 - 1. Applicator shall designate a single individual as project foreman who shall be on site at all times during installation.
 - 2. Contractor must show and have QCA Qualified Contractor/Applicator paperwork from the manufacturer of the coating system, as required to obtain a long-term jobsite specific warranty.
- D. Convene a pre-application meeting before the start of application of coating system. Require attendance of parties directly affecting work of this section, including: architect, contractor, applicator, and authorized representative of the coating system manufacturer and interfacing trades. Review the following:
 - 1. Drawings and specifications affecting work of this section.
 - 2. Protection of adjacent surfaces.
 - 3. Surface preparation and substrate conditions.
 - 4. Application.
 - 5. Field quality control.

6. Protection of coating system.
7. Repair of coating system.
8. Coordination with other work.

1.05 DELIVERY, STORAGE & HANDLING

- A. Delivery: Materials shall be delivered to the job site in sealed, undamaged containers. Each container shall be clearly marked with manufacturer's label showing type of material, color, and lot number.
- B. Storage: Store all materials in a clean, dry place with a temperature range in accordance with manufacturer's instructions.
- C. Handling: Handle products carefully to avoid damage to the containers. Read all labels and material safety data sheets prior to use.

1.06 PROJECT SITE CONDITIONS

- A. Maintain environmental conditions (temperature, humidity, and ventilation) within the limits recommended by the manufacturer.
- B. All concrete should be tested for moisture before applying a seamless coating. If moisture emissions exceed 5 lbs/1000 square feet (ASTM F1869) or if the relative humidity (RH) exceeds 75% (ASTM F2170), see EC-15 Moisture Vapor Barrier product specification.
- C. Concrete must be at least 2500 psi.
- D. Concrete must be cured for a minimum of 28 days before coating is applied.
- E. Schedule coating work to avoid excessive dust and airborne contaminants. Protect work areas from excessive dust and airborne contaminants during coating application.
- F. Before any work is started, the applicator shall examine all surfaces for any deficiencies. Should any deficiencies exist, the architect, owner or general contractor shall be notified in writing and any corrections necessary shall be made.

1.07 WARRANTY

- A. Upon completion of the work in this section provide a written warranty from the manufacturer against defects of materials for a period of 5 (five) years. To obtain project specific warranty the coating system applicator must be a Westcoat Qualified Contractor/ Applicator and apply for warranty.

PART 2 PRODUCTS

2.01 MANUFACTURERS

- A. Acceptable manufacturer: Westcoat Specialty Coatings; 4007 Lockridge Street, San Diego, CA 92102. Telephone 800-250-4519. Fax 619-255-7187. Website: www.westcoat.com.

2.02 MATERIALS

- A. As basis of design Westcoat Texture Crete Wood Finish (no substitutions will be accepted): A series of polymer modified cementitious coatings bonded to concrete and has a variety of optional finishes and sealers.

2.03 COMPONENTS

- A. Texture Crete Wood Finish: Decorative cementitious coating designed for concrete resurfacing.
 1. Primer: EC-11 Water-Based Epoxy, 2 parts A to 1 part B (by volume). Primer applied at 250-350 square feet per gallon.
 2. Slurry Coat: Combine and mix one 50 pound bag of TC-2 Smooth Texture Cement with TC-40 Liquid Colorant (1 to 4 ounces), 1 gallon of WP-81 Cement Modifier, and up to ½ gallon of water. Apply at 150-200 square feet per batch.
 3. Pattern Installation: CA-60 Grout Tape applied to Slurry coat in a simulated wood plank pattern.

4. Texture Coat: The Texture Coat is a two-coat application, featuring a Slurry Coat and final Texture Coat. For the first coat, combine and mix one 50 pound bag of TC-2 Smooth Texture Cement, ¾ gallon of WP-81 Cement Modifier, up to ¾ gallon of water, and TC-40 Liquid Colorant (1 to 4 ounces). Apply by trowel or squeegee at 150 to 200 square feet per batch and allow to dry. For the second coat and texture, combine and mix one 50 pound bag of TC-2 Smooth Texture Cement, ¾ gallon of WP-81 Cement Modifier, up to ¾ gallon of water, and TC-40 Liquid Colorant (1 to 4 ounces). Apply by trowel or squeegee at 150 to 200 square feet per batch. Promptly, use a broom or brush to create a wood grain finish.
5. Water-Based Stain: Apply SC-35 Water-Based Stain at a rate of 150-400 square feet per gallon.
6. Sealer: SC-70 Acrylic Lacquer Sealer applied by spraying, brushing, or rolling at a rate of 200-300 square feet per gallon.

2.04 ACCESSORIES

A. Supplemental Materials:

1. Concrete repairs can be made with TC-23 Mortar Mix as needed.
2. Optional cove base: EC-76 Epoxy Cove Gel.
3. WP-47-3 Seam Tape for crack repair.
4. Optional aggregate: CA-30 Small Safe Grip, CA-31 Large Safe Grip or TC-65 Quartz Sand designed to meet the owners skid resistance requirements.
5. Optional primer: WP-81 Cement Modifier or EC-12 Epoxy Primer can be used in place of the EC-11 Water Based Epoxy.

Optional Topcoats:

6. SC-42 WB Hybrid Acrylic Sealer may be used in place of SC-70 for textures requiring a more natural look.
7. SC-65G WB Gloss Polyurethane may be used in place of SC-70 for a low odor, solvent free, mar and chemical resistant gloss sealer.
8. SC-65SG WB Semi-Gloss Polyurethane may be used in place of SC-70 for a low odor, solvent free, mar and chemical resistant semi-gloss sealer.
9. SC-65F WB Flat Polyurethane may be used over the SC-65G Gloss or SC-65SG Semi-Gloss for a low odor, solvent free, mar and chemical resistant flat sealer.
10. EC-95G Gloss Polyurethane may be used in place of SC-70 for a mar and chemical resistant gloss finish, where odor and flammability is not an issue.
11. EC-95F Flat Polyurethane may be used over the EC-95G for a mar and chemical resistant flat finish, where odor and flammability is not an issue.

2.05 SOURCE QUALITY CONTROL

A. Verification of Performance

1. Physical Properties: The finish Texture-Crete Wood Finish System shall have the following approximate performance characteristics:

a. Bond Strength to concrete (ASTM C297)	278 PSI
b. Bond Strength after accelerated aging (ASTM C756)	249 PSI
c. Abrasion Test (ASTM D1242)	11% reduction
d. Freeze thaw on concrete (ASTM C67)	171 PSI
e. Concentrated load (AC39)	No apparent damage
f. Water absorption (ASTM D570)	6.5%
g. Percolation test (AC39 Sec. 4 G)	.25 inches
h. Tensile Strength (ASTM C190-85)	855 PSI
i. Compressive Strength (ASTM C109-88)	5690 PSI
j. Flexural Strength	1835 PSI
k. Impact Strength	22 in/lbs.

PART 3 EXECUTION

3.01 EXAMINATION

- A. Verification of Conditions.
 - 1. Inspect all surfaces to receive cementitious coating. Verify that surfaces are dry, clean, and free of contaminants that would prevent epoxy flooring from properly adhering to the surface.
 - 2. Conduct calcium chloride testing according to ASTM F1869.
 - 3. Before starting work, report in writing to the authority having jurisdiction any unsatisfactory conditions.

3.02 SURFACE PREPARATION

- A. Prepare surfaces using methods recommended by the manufacturer for achieving the best result for the substrate under the project conditions.
- B. Create a surface profile equal to CSP 3 as specified ICRI.
- C. Clean Surfaces thoroughly prior to installation.
- D. Rout and clean moving cracks and joints: fill with manufacturer's recommended flexible epoxy filler material.
- E. Repair any non-moving surface deviations with manufacturers recommended patching material.

3.03 INSTALLATION

- A. Install coatings in accordance with manufacturer's instructions.
- B. Mix all materials in accordance with manufacturer's instructions.
- C. Use application equipment, tools, and techniques in accordance with manufacturer's instructions.
- D. Uniformly apply coatings at spread rates and in number of coats to achieve specified coverage.
- E. Adhere to all limitations, instructions, and cautions for cementitious coating as stated in the manufacturer's published literature.

3.04 FIELD QUALITY CONTROL

- A. Verify coatings and other materials are as specified.
- B. Verify coverages and finish of the system as work progresses.
- C. Manufacturer's representative shall provide technical assistance and guidance for surface preparation and application of coating systems.

3.05 PROTECTION AND CLEAN-UP

- A. Installation areas must be kept free from traffic and other trades during the application procedure and cure time.
- B. Protect finished surfaces of coating system from damage during construction.
- C. Touch-up, repair or replace damaged flooring system after substantial completion.
- D. Clean area and remove all debris upon completion of work. Dispose of empty containers properly according to current local, state and federal regulations.
- E. Allow material to cure 4 to 6 hours before light pedestrian traffic is permitted, 24 hours before heavy traffic and an additional 72 hours before vehicular traffic is permitted.

3.06 MAINTENANCE

- A. Contractor shall provide to owner, maintenance and cleaning instructions for the cementitious coating system upon completion of work. Owner is required to clean and maintain the surfaces to maintain manufacturer's warranty.

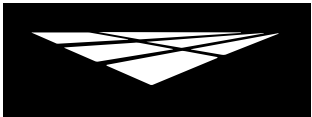
END OF SECTION

This guide specification has been prepared by Westcoat Specialty Coating Systems to assist design professionals in developing a project specific specification. This guide is a template that must be reviewed and adapted by specifiers to comply with project requirements. This guide specification is not to be copied directly into a project specification manual without review.



westcoat®
SPECIALTY COATING SYSTEMS

COLOR CHARTS



TC-40 is shown here mixed into TC-2 Smooth Texture White Cement. Colors shown at 1 fl. oz. and 2 fl. oz. loadings except for Raw Umber shown at 4 fl. oz. and 8 fl. oz. loadings.



Bark | 305 1 fl. oz.



2 fl. oz.



Cinnamon | 304 1 fl. oz.



2 fl. oz.



Peach | 302 1 fl. oz.



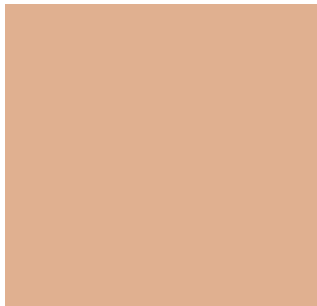
2 fl. oz.



Clay | 309 1 fl. oz.



2 fl. oz.



Straw | 301 1 fl. oz.



2 fl. oz.



Smoke | 308 1 fl. oz.



2 fl. oz.



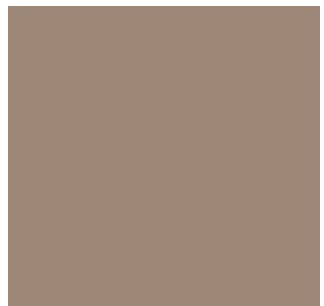
Yellow | 311 1 fl. oz.



2 fl. oz.



Raw Umber | 312 4 fl. oz.



8 fl. oz.



CAUTION:

Color will vary between products and sheens. This chart is for reference only. Please request an actual color sample or apply sample on site before beginning any project.





Water-Based Stains have been applied over TC-4 Fine Texture Cement



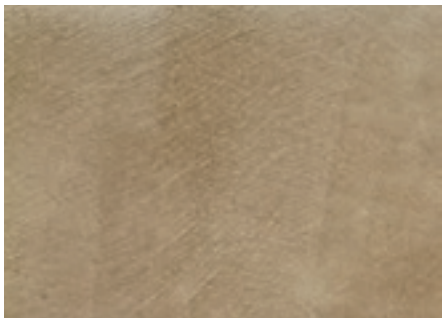
Shale | 516



Armor | 514



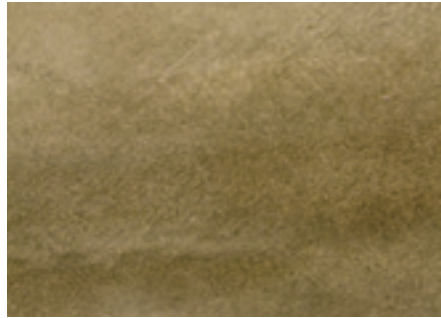
Onyx | 509



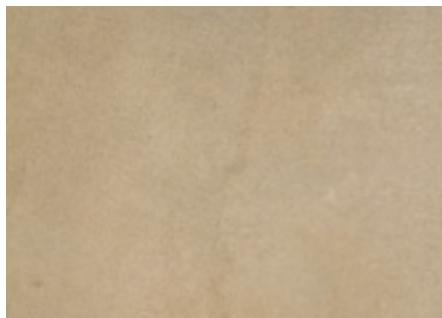
Umber | 521



Camel | 505



Olive | 520



Sahara | 518



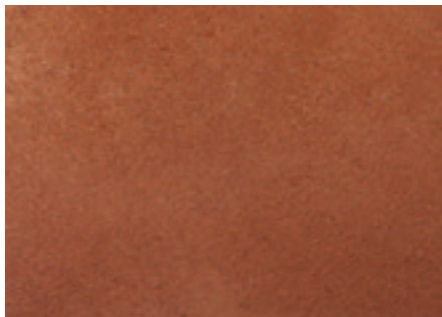
Sienna | 513



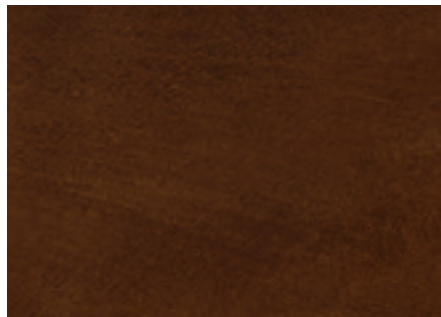
Sepia | 511



Copper | 508



Adobe | 515



Mahogany | 501

Not shown but also available in Ivory | 517



CAUTION:

Color will vary between products and sheens. This chart is for reference only. Please request an actual color sample and apply sample on site before beginning any project.





Blends have been applied over TC Cements see back for reference chart.



Coffee



Henna



Auburn



Tobacco



Russet



Dust



Arroyo



Suede



Luna



Flintstone



Tornado



Raven



CAUTION:

Color will vary between products and sheens. This chart is for reference only.
Please request an actual color sample or apply sample on site before beginning any project.



WATER-BASED STAIN BLENDS	Texture-Coat Cement	Liquid Colorant	Formula
Arroyo	TC-2 White Texture Cement	1/4 ounce Cinnamon	2 Parts Ivory : 1 Part Sepia
Auburn	TC-2 White Texture Cement	1/4 ounce Cinnamon	Adobe
Coffee	TC-2 White Texture Cement	1/4 ounce Smoke	2 Parts Mahogany : 1 Part Onyx
Dust	TC-2 White Texture Cement	1/4 ounce Cinnamon	Umber
Flintstone	TC-5 Light Gray Texture Cement	n/a	2 Parts Water : 1 Part Sepia
Henna	TC-2 White Texture Cement	1/4 ounce Cinnamon	4 Parts Adobe : 1 Part Copper
Luna	TC-2 White Texture Cement	1/4 ounce Smoke	Shale
Raven	TC-2 White Texture Cement	1/4 ounce Smoke	Onyx
Russett	TC-2 White Texture Cement	1/4 ounce Cinnamon	4 Parts Sahara : 1 Part Adobe
Suede	TC-2 White Texture Cement	1/4 ounce Cinnamon	8 Parts Water : 1 Part Sepia
Tobacco	TC-2 White Texture Cement	1/4 ounce Cinnamon	3 Parts Water : 1 Part Mahogany
Tornado	TC-2 White Texture Cement	1/4 ounce Smoke	6 Parts Shale : 1 Part Onyx

- Color will vary. This chart is for reference only. Please apply sample on site before beginning any project.
- Please contact your distributor or a Westcoat representative for detailed Water-Based Stain Blend instructions.
- All SC-35 Water-Based Stain colors need to be boxed or combined per formula prior to application..





westcoat®
SPECIALTY COATING SYSTEMS

SAMPLE WARRANTY



WARRANTY

WESTCOAT TEXTURE CRETE WOOD FINISH SYSTEM MATERIAL WARRANTY

Subject to the conditions, limitations and requirements set forth below, Westcoat warrants the Westcoat Texture Crete materials to be free of defects in the material for a period of five (5) years from the date of original purchase of the materials provided that the materials are installed by a factory trained state-licensed contractor enrolled in the Westcoat QCA program and subject to all terms and conditions set forth below. Westcoat disclaims any warranty for the labor or installation of the Texture Crete materials.

If the Westcoat Texture Crete materials fail due to defects within the warranty period, Westcoat, in its sole discretion, will either provide replacement materials for the defective Texture Crete materials or reimburse the original purchaser in an amount not to exceed the original cost of the materials. Westcoat shall in no way be responsible or liable for any labor costs or any incidental or consequential damages, including without limitation, economic losses, lost profits, business interruption, loss of use, contribution, indemnity or other losses arising from the use of the Texture Crete materials.

This warranty is limited to the original purchases and is non-transferable. This warranty is void if the Texture Crete materials are: not properly maintained; not installed pursuant to the current system information sheet; and/or applied at any area that is not built in accordance with applicable building codes. The warranty is also void if all of the materials are not purchased from an authorized distributor of Westcoat.

This warranty does not apply to and Westcoat has no responsibility or liability for: (1) the condition or movement of the substrate; (2) moisture rising from substrate and/or efflorescence; (3) the loss of gloss, fading or cleaning; (4) repairs and/or maintenance of the sealer and texture coat (5) waterproofing of any sort; (6) abuse or misuse of the materials; or (7) improper installation; or (8) surfaces less than 2500 psi concrete

THIS MATERIAL WARRANTY AND THE REMEDIES PROVIDED HEREUNDER ARE EXCLUSIVE AND GIVEN IN LIEU OF ALL OTHER WARRANTIES (WHETHER WRITTEN, ORAL, IMPLIED OR STATUTORY). THERE ARE NO OTHER WARRANTIES, EITHER EXPRESSED OR IMPLIED, INCLUDING BUT NOT LIMITED TO, WARRANTIES OF MERCHANTABILITY AND FITNESS FOR A PARTICULAR PURPOSE, THAT EXTEND BEYOND THAT SPECIFICALLY DESCRIBED HEREIN. PURCHASER'S SOLE AND EXCLUSIVE REMEDY AGAINST THE MANUFACTURERS OF WESTCOAT, INCLUDING CLAIMS BASED UPON THE MANUFACTURER'S NEGLIGENCE OR STRICT LIABILITY, SHALL BE LIMITED SOLELY TO THE REPLACEMENT OF ANY DEFECTIVE TEXTURE CRETE MATERIAL OR A PAYMENT BY THE MANUFACTURER IN AN AMOUNT EQUAL TO THE COST OF THE ORIGINAL TEXTURE CRETE MATERIAL.

The Westcoat Texture Crete system requires a maintenance topcoat with WESTCOAT ACRYLIC TOPCOAT (or Westcoat Sealer) specified by a factory representative, every three to five years (depending on ultraviolet exposure and/or traffic) as determined by a Westcoat QCA OR authorized inspector. Inspections are required one year after installation and every two years thereafter by a Westcoat QCA or an authorized inspector. The record of the inspection must be kept in writing and entitlement to the benefits of this warranty require the purchaser to show proof of purchase of the materials and the record of inspection(s).

All claims arising from any defect in the Texture Crete materials or under this Warranty shall be made, in writing, to Westcoat within ninety (90) days of the discovery of the alleged defect and within the time period of this warranty. Upon notification, Westcoat shall have the right to inspect and determine course of repair. The absence of a written claim within this time period shall constitute a waiver of all claims, rights and damages against Westcoat, and its affiliates. This warranty shall not toll or extend any statute of limitation applicable to a claim of negligence, breach of contract or strict liability against Westcoat.

Any and all disputes, claims or damages arising out of the use of Texture Crete materials or this Warranty shall be arbitrated in the County of San Diego, State of California, utilizing the services of a neutral dispute resolution service upon which the purchaser and Westcoat agree, or if they cannot agree, utilizing the services of the American Arbitration Association. The purchaser and Westcoat hereby waive any right they may have to have a jury decide any dispute.





westcoat®
SPECIALTY COATING SYSTEMS

GENERAL MAINTENANCE



EXTERIOR COATINGS

Westcoat exterior coating systems (including systems such as ALX, ALX Pro, MACoat, Texture-Crete, etc.) offer durable, high-performance, long lasting surfaces that are designed to provide years of service against normal wear and usage. To extend the service life of your Westcoat system, it is recommended to implement a routine cleaning regimen and have periodic deck inspections. This information is a basic guideline only.

Routine Cleaning

All coating systems require maintenance and upkeep to ensure continued performance and to maximize the life of the system. Maintenance methods may vary depending on the system, texture, topcoat or sealer, environment conditions, slope, drainage, volume and type of traffic, and use of space.

Ensure that the coating surface is free from debris such as sand, gravel, metals, or other abrasives that can result in premature wear of the topcoat or sealer. Grease, oils, and other contaminants should be removed regularly to maintain the surface.

Be sure to test all cleaning agents in an unnoticeable area to ensure compatibility. Refer to the manufacturer's instructions and dilution rates for all cleaning agents. Routine cleaning can be achieved by using a mild cleaning solution such as "Simple Green" or mild soap. Utilize a brush or broom to help agitate and loosen up dirt and debris. Ensure that the surface is thorinsed with clean water thoroughly. Do not allow cleaning agents to dry on the surface.

A low psi pressure washer (do not exceed 1000 psi) equipped with fan tip and/or a soft bristle floor scrubber brush on a floor machine may be used to help aid in cleaning. Do not use metal-based or coarse brushes as they may damage the surface.

To remove water stains from calcium or lime build up, 100 grain vinegar can be used. Start by diluting the vinegar, eight parts water to one part vinegar. If needed, you can use the vinegar diluted one to one with water. Avoid using neat or full strength 100 grain vinegar. Scrub the diluted vinegar mixture over the surface. Be sure to completely rinse any residue thoroughly with clean water. Avoid using vinegar mixture or any cleaner in direct sunlight, as direct sun may evaporate cleaning solution and may leave a film or residue on the surface.

Any information provided by Westcoat Specialty Coating Systems is for general purposes only. Nothing presented by Westcoat Specialty Coating Systems constitutes design advice or a recommendation specific to a particular situation. Westcoat Specialty Coating Systems directs you to consult with the appropriate qualified design professional to ensure any product or information meets the requirements for the specific intended use, and complies with all building plans, specifications, codes or regulations. Westcoat Specialty Coating Systems expressly and specifically disclaims responsibility for any damages arising from the use of any information, and each recipient of this information agrees that there is no express or implied warranty, including any implied warranty of merchantability or fitness for a particular purpose, arising from any information provided by Westcoat Specialty Coating Systems.





EXTERIOR COATINGS

Maintenance and Inspections

All exterior coating systems should be periodically inspected and regularly maintained by a Westcoat Qualified Contractor Applicator (QCA). Inspections are required one year after installation and every two years thereafter by a factory authorized representative. After 3-5 years, a "reseal" (thorough cleaning and reapplication of Westcoat topcoat/sealer) may be required. Existing sealer or coating should be lightly abraded before application of topcoat or sealer. Some topcoats and sealers may require additional preparation, prior to recoating. Should damage occur, be sure to contact the original Westcoat applicator to inspect and repair the coating system immediately.

Best Practices

- Do not expose the coating surface to traffic, moisture, or chemical agents until the system is fully cured.
- Outdoor carpet or other matting materials are not recommended, as they may trap moisture, contribute to mildew, mold, and may damage the topcoat or sealer.
- Potted plants and/or planter boxes should be elevated off the surface and moved monthly to allow the coating to dry properly. Planter drainage may cause staining due to fertilizers and growing mediums. Drip pans or saucers should be utilized.
- Outdoor furniture should have coasters or pads to prevent indentations and damage to the coating.
- If barbecues are to be used, it is recommended to place a protective pan down to prevent damage from hot grease or coals.
- Do not cut, slice, or puncture the coating system. This is especially true for all waterproofing systems, such as ALX, ALX Pro, and MACoat.
- Avoid dragging bulky metal, concrete, or other types of objects over the surface.
- Fire pits are not recommended for use with Westcoat coating systems.
- Do not expose the coating system to solvents, harsh chemicals, or acids.
- Avoid subjecting the coating system to repeated heavy rolling loads.
- Tape or other adhesives should not be applied to finished surfaces.

Any information provided by Westcoat Specialty Coating Systems is for general purposes only. Nothing presented by Westcoat Specialty Coating Systems constitutes design advice or a recommendation specific to a particular situation. Westcoat Specialty Coating Systems directs you to consult with the appropriate qualified design professional to ensure any product or information meets the requirements for the specific intended use, and complies with all building plans, specifications, codes or regulations. Westcoat Specialty Coating Systems expressly and specifically disclaims responsibility for any damages arising from the use of any information, and each recipient of this information agrees that there is no express or implied warranty, including any implied warranty of merchantability or fitness for a particular purpose, arising from any information provided by Westcoat Specialty Coating Systems.