

westcoat[®]
SPECIALTY COATING SYSTEMS

STAMP-IT[™]

TC **TEXTURE COAT**
DECORATIVE TEXTURED SURFACES



westcoat[®]
SPECIALTY COATING SYSTEMS

STAMP-IT SUBMITTAL PACKAGE

DIVISION 9 – FINISHES

SECTION 09 97 26 CEMENTITIOUS COATINGS

TABLE OF CONTENTS

System Brochure	3-5
System Specification Sheet	6-10
CSI Specification	11-15
Color Charts	16-18
Sample Warranty	19-20
General Maintenance	21-23



westcoat®
SPECIALTY COATING SYSTEMS

SYSTEM BROCHURE



ABOUT STAMP-IT:

Create the look of brick, slate, flagstone, tile, or stone. Stamp-It is a 1/4" thick polymer modified cementitious overlay designed to permanently transform plain and ugly concrete into a beautiful, decorative surface. Designed for use over existing concrete on pool decks, patios, driveways, and walkways, Stamp-It is appropriate in both commercial and residential environments.



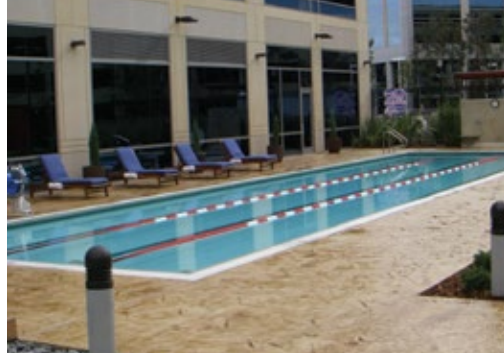
ULTRA-TOUGH. PROTECTIVE.

- Cost-effective
- High build
- Stamped concrete look
- Optional skid resistance
- Unlimited colors
- Highly decorative
- Variety of textures and patterns
- UV resistant options



FOR PROFESSIONAL USE ONLY.





TOP IT OFF

Perfect for high-end projects, Stamp-It delivers the look of stamped concrete on driveways, walkways, patios, courtyards, entryways, interior floors, restaurant floors, showroom floors, and pool decks.

DURABLE

Designed for the professional installer, Stamp-It is user friendly and durable. System includes epoxy primer, stamp process, coloring options, and choice of a sealer, depending on requirements.

VARIETY

Match any customer’s color scheme with Stamp-It’s varied palette of coloring options. Employ one or more of the many textures or patterns to create that custom look. Choose from a variety of sealers, for both indoor and outdoor applications.

NO REMOVAL

Create a stamped concrete finish without the hassle of removing old concrete. Once the prep is complete, the Stamp-It system can be applied over the existing surface with minimal impact on the landscape or surrounding environment. By not removing the concrete substrate, less demand is placed on our solid waste facilities and our environment.

Stamp-It



Primer

Stamp Layer

Color

Seal Coat



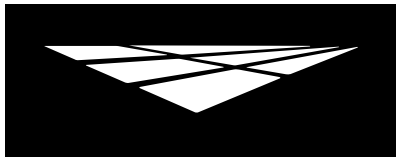
HAVE A QUESTION? GET IN TOUCH:
westcoat.com / 800.250.4519 / info@westcoat.com

4007 Lockridge Street, San Diego, CA 92102, USA.



westcoat®
SPECIALTY COATING SYSTEMS

SYSTEM SPECIFICATION SHEET



Description

Westcoat Stamp-It™ is a ¼ inch polymer-modified cementitious overlay. Stamp-It™ creates the look of stamped concrete over new or existing concrete.

Uses

Stamp-It™ is designed to transform aesthetically unattractive concrete into a very decorative surface. For use over existing concrete substrates such as driveways, walkways, patios, garage floors, courtyards, entryways, interior floors, restaurant floors, showrooms and pool decks. Stamp-It™ can be installed in both the commercial and residential environments.

System Overview



System Data				
Coverages	Primer 250-300 ft ² per gallon	Stamp Layer 25 ft ² at ¼ inch per batch	WB Stain 150-400 ft ² per gallon	Sealer 200-300 ft ² per gallon
Components	EC-11 Water-Based Epoxy EC-72 Epoxy Patch Gel TC-6 Stamp Texture Cement TC-40 Liquid Colorant CA-20 Stamp Release SC-35 Water-Based Stain SC-70 Acrylic Lacquer Sealer		Shelf Life 3 years 2 years 1 year 1 year 2 years 2 years 5 years	

Advantages

Cost Effective • High Build • Real Stamped Concrete Look • Optional Skid Resistance • Unlimited Colors • Highly Decorative • Variety of Textures and Patterns

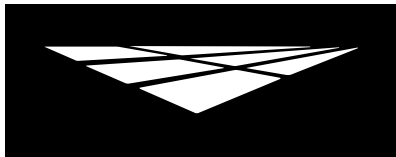
Inspection

Concrete must be clean, dry and free of grease, paint, oil, dust, curing agents, laitance or any foreign material that will prevent proper adhesion. Drainage problems or puddling must be corrected prior to the installation of Stamp-It™. The concrete should be at least 2,500 PSI, 3½ inches thick and meet local building codes.

Moisture

All concrete should be tested for moisture before applying a seamless coating. If moisture emissions exceed 5 lbs/1000 square feet (ASTM F1869) or if the relative humidity (RH) exceeds 75% (ASTM F2170), please refer to the EC-15 Moisture Vapor Barrier Product Specification Sheet.

DISCLAIMER: PURCHASER'S SOLE AND EXCLUSIVE REMEDY AGAINST THE MANUFACTURER OF WESTCOAT, SHALL BE LIMITED SOLELY TO THE REPLACEMENT OF ANY DEFECTIVE MATERIAL OR A PAYMENT BY THE MANUFACTURER IN AN AMOUNT EQUAL TO THE COST OF THE ORIGINAL MATERIAL.



westcoat[®]
SPECIALTY COATING SYSTEMS

**SYSTEM
SPECIFICATION**

TC

TEXTURE COAT
DECORATIVE TEXTURED SURFACES

Stamp-It™

Preparation

Cut open cracks with a diamond crack chaser and remove any existing joint sealant. Prepare concrete to a profile equal to CSP 4-6 as specified by ICRI. Shot blast or scarify the surface to create a heavily textured profile. Vacuum, sweep, then water blast clean with a minimum 3,500 psi or greater water blaster.

Crack Treatment

Cut open small cracks and fill with EC-72. Use WP-47-3 Seam Tape to help reinforce the crack, then trowel EC-72 into the tape and smooth. Broadcast #30 silica sand onto the wet epoxy to provide a rough surface for the Stamp-It™ to bond. This remedial approach to patch cracks is not guaranteed and it should be noted that when the substrate moves, it could likely crack the Stamp-It™ material.

Concrete Repair

For concrete that needs repairs beyond just dormant cracks, TC-23 Mortar Mix can be used. TC-23 is designed to be used as a general concrete repair mix for horizontal and vertical applications and can be used as a patching/underlayment material under most Westcoat systems. Please refer to the TC-23 Mortar Mix Product Specification Sheet for details.

Primer

Mix 2 parts A with 1 part B (by volume) of EC-11 Water-Based Epoxy for 3-5 minutes or until completely combined. Apply the primer, using a 1/2 to 3/4 inch nap roller, evenly over the surface to be coated. Apply at a rate of 250-300 square feet per gallon. Within seconds of application, broadcast the surface with #30 silica sand to refusal. This will aid adhesion of the stamp mix. Make sure not to allow the EC-11 to puddle, as it will not cure properly and allow a minimum of 4 hours to dry.

Stamp Layer

Honor all expansion joints by identifying and tagging them using pins or concrete nails. The joints will be re-cut later in the process. Combine 1 bag of TC-6 with approximately 4-5 quarts of water using a mechanical mixer. The best mixer has a heavy duty rectangular paddle. Add 1-4 ounces of the chosen TC-40 Liquid Colorant. Mix at a low rpm until you have an even consistency.

Pour the mix onto the primed surface and spread using a gauge rake set at 1/4 inch. Smooth slightly with a float or a trowel to remove rake lines or to detail as needed. Misting water onto the surface will aid in smoothing out the gauge rake lines. A simple garden sprayer works best. Coverage of TC-6 is about 25 square feet per batch at 1/4 inch thick.

Allow the mix to harden, until firm enough for stamping. Your hand should be able to slightly indent the surface, but the surface should not be too soft. When it is firm enough, spray the surface with CA-20 Stamp Release. Apply the release to the stamps as well. Place the stamps onto the surface and impress them slightly to create the necessary effect. Timing is everything. You should use caution if you are new to this process. Continue to mix, spread and stamp as you go, paying special attention to timing.

The product will dry at different rates depending on mixing, temperature, humidity and whether or not you are working in the shade or sun. At 55 degrees, stamping should be done in 3-5 hours, at 80 degrees, in as soon as 15-30 minutes.

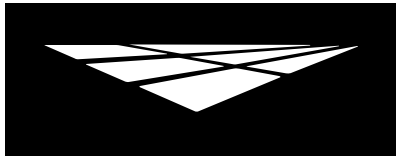
DISCLAIMER: PURCHASER'S SOLE AND EXCLUSIVE REMEDY AGAINST THE MANUFACTURER OF WESTCOAT, SHALL BE LIMITED SOLELY TO THE REPLACEMENT OF ANY DEFECTIVE MATERIAL OR A PAYMENT BY THE MANUFACTURER IN AN AMOUNT EQUAL TO THE COST OF THE ORIGINAL MATERIAL.



westcoat[®]

4007 Lockridge St • San Diego, CA 92102
800-250-4519 • Fax 619-255-7187 • westcoat.com

2 of 4
Stamp-It™ 1/22



westcoat[®]
SPECIALTY COATING SYSTEMS

**SYSTEM
SPECIFICATION**

TC

TEXTURE COAT
DECORATIVE TEXTURED SURFACES

Stamp-It™

Cutting and Detailing

After the Stamp-It™ has dried, locate all expansion joints as indicated by your tags or marks placed earlier. Snap lines and cut through the Stamp-It™ to honor all existing expansion joints. Scrape and grind all edges to give the installation a finished look. Rout all joints and perform any remaining repair or detailing of the surface. Grind joints back to virgin concrete.

Release Removal

Clean the surface using a mild degreaser, mild dish soap or TSP, to remove all of the release previously applied. A floor scrubber or power washer will help to loosen and remove the film.

WB Stain

Apply SC-35 using a pump sprayer, airless sprayer, HVLP sprayer, brush or broom. For a mottled effect, use water to pre-dampen the surface before, or in conjunction with the stain. Multiple colors and various amounts of water may be applied at the same time for a variegated finish. SC-35 can be applied in multiple coats to achieve a solid color. Water-Based Stain can be thinned using water, up to equal parts. Thinning will affect the depth of color and may require extra coats.

The coverage will vary depending on the surface. Up to 400 square feet per gallon on a smooth surface and between 150-250 square feet on rough surfaces. Product performs best if applied in thin, even coats. When temperatures are above 80 degrees, it may be necessary to dampen the surface prior to application to prevent material from drying instantly.

Sealer

Apply SC-70 Acrylic Lacquer Sealer by spraying, brushing or rolling with a ½ to ¾ inch nap, non-shedding roller cover at the rate of 200-300 square feet per gallon. If rolled, neatly cut-in all edges with a brush and roll the center using a ½ inch to ¾ inch nap, good quality roller cover.

Dry Time

Allow 2 to 6 hours drying time at 70 degrees before permitting light pedestrian traffic. For best results, allow to cure for 24 hours before direct traffic is permitted or additional coats are applied. Allow 48 hours before heavy objects are placed on the surface and 72 hours before permitting vehicular traffic.

Optional Materials

Cement Options

- TC-23 Mortar Mix may be used as a general concrete repair mix for horizontal and vertical applications and can be used as a patching/underlayment material.

Sealer Options

- SC-70F can be used when a natural look, acrylic lacquer finish is required.
- For textures requiring a more natural look, apply SC-42 WB Hybrid Acrylic Sealer.
- SC-65G WB Gloss Polyurethane Sealer, SC-65F WB Flat Polyurethane Sealer and SC-65SG WB Semi-Gloss Polyurethane Sealer can be used for a low odor, solvent free, mar and chemical resistant sealer.

Skid Resistance

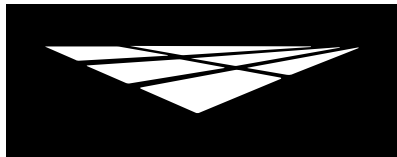
- CA-30 Small Safe Grip or CA-31 Large Safe Grip can be added to the final coat of sealer for added skid resistance.

DISCLAIMER: PURCHASER'S SOLE AND EXCLUSIVE REMEDY AGAINST THE MANUFACTURER OF WESTCOAT, SHALL BE LIMITED SOLELY TO THE REPLACEMENT OF ANY DEFECTIVE MATERIAL OR A PAYMENT BY THE MANUFACTURER IN AN AMOUNT EQUAL TO THE COST OF THE ORIGINAL MATERIAL.



4007 Lockridge St • San Diego, CA 92102
800-250-4519 • Fax 619-255-7187 • westcoat.com

3 of 4
Stamp-It™ 1/22



westcoat[®]
SPECIALTY COATING SYSTEMS

**SYSTEM
SPECIFICATION**

TC

TEXTURE COAT
DECORATIVE TEXTURED SURFACES

Stamp-It™

Clean Up

Uncured material can be removed with soap and warm water. If cured, material can be removed mechanically or with an environmentally-safe solvent.

Maintenance

Exterior surfaces can be swept daily with water and a broom. For tougher dirt or grease, use degreaser diluted with water 20:1 and a soft bristle brush or broom. Be sure to rinse well. To remove calcium or lime build up, brush diluted 100 grain vinegar onto the surface; be sure to rinse any residue.

The Stamp-It™ System should be inspected for wear every 2 to 4 years. The system should be resealed with the appropriate Westcoat clear sealer every 3 to 5 years depending upon traffic and UV exposure. Contact the original installer of Westcoat for complete re-coating instructions.

Health Precautions

Inhalation of vapor or mist can cause headache, nausea, irritation of nose, throat and lungs. Prolonged or repeated skin contact can cause slight skin irritation. Cements contain silicas; dust mask or respirator should be used when mixing, sanding or grinding.

If using solvent based products, they are extremely flammable. Extinguish all pilot lights and sources of ignition such as electrical motors. Be sure to have adequate cross ventilation prior to installing.

Limitations

- This system is designed for professional use only.
- Read Product Specification Sheets for every product you will be using before beginning the project.
- Do not apply at temperatures below 50°F or above 90°F.
- Rain will wash away uncured Westcoat acrylic products.
- If inclement weather threatens, cover deck to protect new application.
- Sealers will make the surface slippery, please be aware the texture of the surface and how the sealer will affect the look, feel and skid resistance.
- Approval and verification of proposed colors, textures and slip resistance is recommended.
- Do not allow Westcoat products to freeze.

Slip Precaution

Westcoat Specialty Coatings Systems highly recommends the use of a slip-resistant additive to all coatings/systems that may be exposed to wet, oily, greasy or slippery conditions. It is the end user's responsibility to provide a flooring system that meets current safety standards. Westcoat and its distributors will not be responsible for injury incurred during a slip and fall incident. For the current coefficient of friction requirements, please consult your local building codes.

DISCLAIMER: PURCHASER'S SOLE AND EXCLUSIVE REMEDY AGAINST THE MANUFACTURER OF WESTCOAT, SHALL BE LIMITED SOLELY TO THE REPLACEMENT OF ANY DEFECTIVE MATERIAL OR A PAYMENT BY THE MANUFACTURER IN AN AMOUNT EQUAL TO THE COST OF THE ORIGINAL MATERIAL.



westcoat[®]

4007 Lockridge St • San Diego, CA 92102
800-250-4519 • Fax 619-255-7187 • westcoat.com

4 of 4
Stamp-It™ 1/22



westcoat®
SPECIALTY COATING SYSTEMS

CSI SPECIFICATION



SECTION 099726

CEMENTITIOUS COATINGS

PART 1 GENERAL

1.01 SUMMARY

- A. Section includes: Provide a complete acrylic based cementitious coating system for concrete surfaces that meet the requirements for specific use indicated in the contract documents. Include all applicable substrate testing, surface preparation, and detail work.

1.02 RELATED SECTIONS

- A. Section 033000 – Cast-In-Place Concrete
- B. Section 090000 – Finishes

1.03 SUBMITTALS

- A. Submit under provisions of Section 013300.
- B. Product Data: Submit manufacturer's product data sheets on each product and system to be used including:
 - 1. Preparation instructions and recommendations.
 - 2. Storage and handling requirements.
 - 3. Installation methods.
 - 4. Maintenance requirements.
- C. Selection Samples: For each system specified, provide two sets of samples and color charts, representing manufacturer's full range of colors and patterns.

1.04 QUALITY ASSURANCE

- A. All materials used in the cementitious coating system shall be manufactured and provided by a single manufacturer to ensure compatibility and proper bonding.
- B. Use adequate numbers of skilled workmen that are thoroughly trained and experienced in the necessary crafts and completely familiar with the specified requirements and methods needed for proper performance of the work of this section.
- C. Contractor shall have a minimum of three years' experience installing cementitious coatings similar to that which is required for this project and who is acceptable to the manufacturer.
 - 1. Applicator shall designate a single individual as project foreman who shall be on site at all times during installation.
 - 2. Contractor must show and have QCA Qualified Contractor/Applicator paperwork from the manufacturer of the coating system, as required to obtain a long-term jobsite specific warranty.
- D. Convene a pre-application meeting before the start of application of coating system. Require attendance of parties directly affecting work of this section, including: architect, contractor, applicator, and authorized representative of the coating system manufacturer and interfacing trades. Review the following:
 - 1. Drawings and specifications affecting work of this section.
 - 2. Protection of adjacent surfaces.
 - 3. Surface preparation and substrate conditions.
 - 4. Application.
 - 5. Field quality control.
 - 6. Protection of coating system.
 - 7. Repair of coating system.

8. Coordination with other work.

1.05 DELIVERY, STORAGE & HANDLING

- A. Delivery: Materials shall be delivered to the job site in sealed, undamaged containers. Each container shall be clearly marked with manufacturer's label showing type of material, color, and lot number.
- B. Storage: Store all materials in a clean, dry place with a temperature range in accordance with manufacturer's instructions.
- C. Handling: Handle products carefully to avoid damage to the containers. Read all labels and material safety data sheets prior to use.

1.06 PROJECT SITE CONDITIONS

- A. Maintain environmental conditions (temperature, humidity, and ventilation) within the limits recommended by the manufacturer.
- B. All concrete should be tested for moisture before applying a seamless coating. If moisture emissions exceed 5 lbs/1000 square feet (ASTM F1869) or if the relative humidity (RH) exceeds 75% (ASTM F2170), see EC-15 Moisture Vapor Barrier product specification.
- C. Concrete must be at least 2500 psi.
- D. Concrete must be cured for a minimum of 28 days before coating is applied.
- E. Schedule coating work to avoid excessive dust and airborne contaminants. Protect work areas from excessive dust and airborne contaminants during coating application.
- F. Before any work is started, the applicator shall examine all surfaces for any deficiencies. Should any deficiencies exist, the architect, owner or general contractor shall be notified in writing and any corrections necessary shall be made.

1.07 WARRANTY

- A. Upon completion of the work in this section provide a written warranty from the manufacturer against defects of materials for a period of 5 (five) years. To obtain project specific warranty the coating system applicator must be a Westcoat Qualified Contractor/ Applicator and apply for warranty.

PART 2 PRODUCTS

2.01 MANUFACTURERS

- A. Acceptable manufacturer: Westcoat Specialty Coatings; 4007 Lockridge St • San Diego, CA 92102, San Diego, CA 92102. Telephone 800-250-4519. Fax 619-255-7187. Website: www.westcoat.com.

2.02 MATERIALS

- A. As basis of design Westcoat Stamp-It System (no substitutions will be accepted): ¼ inch polymer modified cementitious overlay that creates the look of stamped concrete.

2.03 COMPONENTS

- A. Texture Coat Stamp-It System (no substitutions will be accepted): Decorative cementitious overlay designed to transform concrete into a decorative stamped finish.
 - 1. Primer: EC-11 Water-Based Epoxy Primer 250 to 300 square feet per gallon. Immediately broadcast #30 silica sand lightly into wet EC-11 Primer.
 - 2. Stamp Layer: Combine and mix one 50 pound bag of TC-6 Stamp Texture Cement with 4 to 5 quarts of water and TC-40 Liquid Colorant – 1 to 4 ounces. Apply with gauge rake at 25 square feet per batch. Once firm, spray CA-20 Stamp Release over cement and stamps. Impress stamps onto the surface to effect desired texture.
 - 3. Coloring Options: Apply desired SC-35 Water Based Stain or SC-30 Acid Stain.
 - 4. Sealer: Apply SC-70 Acrylic Lacquer Sealer at 200-300 square-feet per gallon.

2.04 ACCESSORIES

- A. Supplemental Materials:
 - 1. Patching materials shall be EC-72 Epoxy Patch Gel.
 - 2. Concrete repairs can be made with TC-23 Mortar Mix as needed.
 - 3. WP-47-3 Seam Tape for crack repair.
 - 4. Optional aggregate shall be CA-30 Small Safe Grip, CA-31 Large Safe Grip, or other sand designed to meet the owners skid resistance requirements.
- Optional Topcoats:
 - 5. SC-65G WB Gloss Polyurethane may be used IN LIEU of SC-70 when a low odor, solvent free, mar and chemical resistant gloss finish is required.
 - 6. SC-65SG WB Semi-Gloss Polyurethane may be used IN LIEU of SC-70 when a low odor, solvent free, mar and chemical resistant semi-gloss finish is required.
 - 7. SC-65F WB Flat Polyurethane may be used OVER the SC-65G Gloss or SC-65SG Semi-Gloss, when low odor, solvent free, mar and chemical resistant flat finish is required.
 - 8. EC-95G Gloss Polyurethane Topcoat may be used IN LIEU of SC-70 when a gloss, solvent-based polyurethane is required.
 - 9. EC-95F Flat Polyurethane Topcoat may be used OVER EC-95 when a flat, solvent-based polyurethane topcoat is required

PART 3 EXECUTION

3.01 EXAMINATION

- A. Verification of Conditions.
 - 1. Inspect all surfaces to receive cementitious coating. Verify that surfaces are dry, clean, and free of contaminates that would prevent epoxy flooring from properly adhering to the surface.
 - 2. Conduct calcium chloride testing according to ASTM F1869.
 - 3. Before starting work, report in writing to the authority having jurisdiction any unsatisfactory conditions.

3.02 SURFACE PREPARATION

- A. Prepare surfaces using methods recommended by the manufacturer for achieving the best result for the substrate under the project conditions.
- B. Prepare concrete to a profile equal to CSP 4-6 as specified by ICRI.
- C. Clean Surfaces thoroughly prior to installation.
- D. Rout and clean moving cracks and joints: fill with manufacturer's recommended flexible epoxy filler material.
- E. Repair any non-moving surface deviations with manufacturer's recommended patching material.

3.03 INSTALLATION

- A. Install coatings in accordance with manufacturer's instructions.
- B. Mix all materials in accordance with manufacturer's instructions.
- C. Use application equipment, tools, and techniques in accordance with manufacturer's instructions.
- D. Uniformly apply coatings at spread rates and in number of coats to achieve specified coverage.
- E. Adhere to all limitations, instructions, and cautions for cementitious coating as stated in the manufacturer's published literature.

3.04 FIELD QUALITY CONTROL

- A. Verify coatings and other materials are as specified.
- B. Verify coverages and finish of the system as work progresses.
- C. Manufacturer's representative shall provide technical assistance and guidance for surface preparation and application of coating systems.

3.05 PROTECTION AND CLEAN-UP

- A. Installation areas must be kept free from traffic and other trades during the application procedure and cure time.
- B. Protect finished surfaces of coating system from damage during construction.
- C. Touch-up, repair or replace damaged flooring system after substantial completion.
- D. Clean area and remove all debris upon completion of work. Dispose of empty containers properly according to current local, state and federal regulations.
- E. Allow material to cure 4 to 6 hours before light pedestrian traffic is permitted, 24 hours before heavy traffic, and 72 hours before vehicular traffic is permitted.

3.06 MAINTENANCE

- A. Contractor shall provide to owner, maintenance and cleaning instructions for the cementitious coating system upon completion of work. Owner is required to clean and maintain the surfaces to maintain manufacturer's warranty.

END OF SECTION

This guide specification has been prepared by Westcoat Specialty Coating Systems to assist design professionals in developing a project specific specification. This guide is a template that must be reviewed and adapted by specifiers to comply with project requirements. This guide specification is not to be copied directly into a project specification manual without review.



westcoat®
SPECIALTY COATING SYSTEMS

COLOR CHARTS



Applied over TC-4 Fine Texture Cement



Shale | 516



Armor | 514



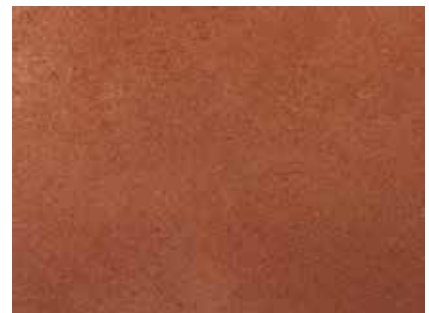
Onyx | 509



Sienna | 513



Copper | 508



Adobe | 515



Sahara | 518



Umber | 521



Olive | 520



Camel | 505



Sepia | 511



Mahogany | 501

Not shown but also available in Ivory | 517



CAUTION:

Color will vary between products and sheens. This chart is for reference only.
Please request an actual color sample or apply sample on site before beginning any project.





TC-40 is shown here mixed into TC-2 Smooth Texture White Cement. Colors shown at 1 fl. oz. and 2 fl. oz. loadings except for Raw Umber shown at 4 fl. oz. and 8 fl. oz. loadings.



Bark | 305 1 fl. oz.



2 fl. oz.



Cinnamon | 304 1 fl. oz.



2 fl. oz.



Peach | 302 1 fl. oz.



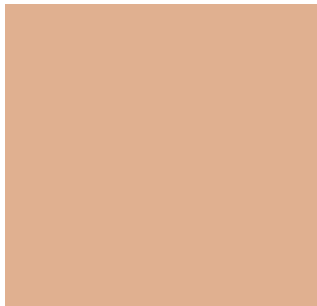
2 fl. oz.



Clay | 309 1 fl. oz.



2 fl. oz.



Straw | 301 1 fl. oz.



2 fl. oz.



Smoke | 308 1 fl. oz.



2 fl. oz.



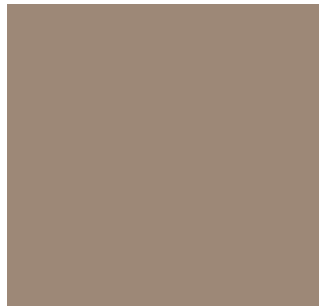
Yellow | 311 1 fl. oz.



2 fl. oz.



Raw Umber | 312 4 fl. oz.



8 fl. oz.



CAUTION:

Color will vary between products and sheens. This chart is for reference only. Please request an actual color sample or apply sample on site before beginning any project.





westcoat®
SPECIALTY COATING SYSTEMS

SAMPLE WARRANTY



WARRANTY

WESTCOAT STAMP-IT MATERIAL WARRANTY

Subject to the conditions, limitations and requirements set forth below, Westcoat warrants the Westcoat Stamp-It materials to be free of defects in the material for a period of five (5) years from the date of original purchase of the materials provided that the materials are installed by a factory trained state-licensed contractor enrolled in the Westcoat QCA program and subject to all terms and conditions set forth below. Westcoat disclaims any warranty for the labor or installation of the Stamp-It materials.

If the Westcoat Stamp-It materials fail due to defects within the warranty period, Westcoat, in its sole discretion, will either provide replacement materials for the defective Stamp-It materials or reimburse the original purchaser in an amount not to exceed the original cost of the materials. Westcoat shall in no way be responsible or liable for any labor costs or any incidental or consequential damages, including without limitation, economic losses, lost profits, business interruption, loss of use, contribution, indemnity or other losses arising from the use of the Stamp-It materials.

This warranty is limited to the original purchases and is non-transferable. This warranty is void if the Stamp-It materials are: not properly maintained; not installed pursuant to the current system information sheet; and/or applied at any area that is not built in accordance with applicable building codes. The warranty is also void if all of the materials are not purchased from an authorized distributor of Westcoat.

This warranty does not apply to and Westcoat has no responsibility or liability for: (1) the condition or movement of the substrate; (2) moisture rising from substrate and/or efflorescence; (3) the loss of gloss, fading or cleaning; (4) repairs and/or maintenance of the sealer and texture coat (5) waterproofing of any sort; (6) abuse or misuse of the materials; or (7) improper installation; or (8) surfaces less than 2500 psi concrete.

THIS MATERIAL WARRANTY AND THE REMEDIES PROVIDED HEREUNDER ARE EXCLUSIVE AND GIVEN IN LIEU OF ALL OTHER WARRANTIES (WHETHER WRITTEN, ORAL, IMPLIED OR STATUTORY). THERE ARE NO OTHER WARRANTIES, EITHER EXPRESSED OR IMPLIED, INCLUDING BUT NOT LIMITED TO, WARRANTIES OF MERCHANTABILITY AND FITNESS FOR A PARTICULAR PURPOSE, THAT EXTEND BEYOND THAT SPECIFICALLY DESCRIBED HEREIN. PURCHASER'S SOLE AND EXCLUSIVE REMEDY AGAINST THE MANUFACTURERS OF WESTCOAT, INCLUDING CLAIMS BASED UPON THE MANUFACTURER'S NEGLIGENCE OR STRICT LIABILITY, SHALL BE LIMITED SOLELY TO THE REPLACEMENT OF ANY DEFECTIVE STAMP-IT MATERIAL OR A PAYMENT BY THE MANUFACTURER IN AN AMOUNT EQUAL TO THE COST OF THE ORIGINAL STAMP-IT MATERIAL.

The Westcoat Stamp-It system requires a maintenance topcoat with WESTCOAT ACRYLIC TOPCOAT (or Westcoat Sealer) specified by a factory representative, every three to five years (depending on ultraviolet exposure and/or traffic) as determined by a Westcoat QCA OR authorized inspector. Inspections are required one year after installation and every two years thereafter by a Westcoat QCA or an authorized inspector. The record of the inspection must be kept in writing and entitlement to the benefits of this warranty require the purchaser to show proof of purchase of the materials and the record of inspection(s).

All claims arising from any defect in the Stamp-It materials or under this Warranty shall be made, in writing, to Westcoat within ninety (90) days of the discovery of the alleged defect and within the time period of this warranty. Upon notification, Westcoat shall have the right to inspect and determine course of repair. The absence of a written claim within this time period shall constitute a waiver of all claims, rights and damages against Westcoat, and its affiliates. This warranty shall not toll or extend any statute of limitation applicable to a claim of negligence, breach of contract or strict liability against Westcoat.

Any and all disputes, claims or damages arising out of the use of Stamp-It materials or this Warranty shall be arbitrated in the County of San Diego, State of California, utilizing the services of a neutral dispute resolution service upon which the purchaser and Westcoat agree, or if they cannot agree, utilizing the services of the American Arbitration Association. The purchaser and Westcoat hereby waive any right they may have to have a jury decide any dispute.



westcoat[™]

4007 Lockridge Street San Diego, CA 92102
800.250.4519 • Fax 619.262.8606 • westcoat.com



westcoat®
SPECIALTY COATING SYSTEMS

GENERAL MAINTENANCE



EXTERIOR COATINGS

Westcoat exterior coating systems (including systems such as ALX, ALX Pro, MACoat, Texture-Crete, etc.) offer durable, high-performance, long lasting surfaces that are designed to provide years of service against normal wear and usage. To extend the service life of your Westcoat system, it is recommended to implement a routine cleaning regimen and have periodic deck inspections. This information is a basic guideline only.

Routine Cleaning

All coating systems require maintenance and upkeep to ensure continued performance and to maximize the life of the system. Maintenance methods may vary depending on the system, texture, topcoat or sealer, environment conditions, slope, drainage, volume and type of traffic, and use of space.

Ensure that the coating surface is free from debris such as sand, gravel, metals, or other abrasives that can result in premature wear of the topcoat or sealer. Grease, oils, and other contaminants should be removed regularly to maintain the surface.

Be sure to test all cleaning agents in an unnoticeable area to ensure compatibility. Refer to the manufacturer's instructions and dilution rates for all cleaning agents. Routine cleaning can be achieved by using a mild cleaning solution such as "Simple Green" or mild soap. Utilize a brush or broom to help agitate and loosen up dirt and debris. Ensure that the surface is thorinsed with clean water thoroughly. Do not allow cleaning agents to dry on the surface.

A low psi pressure washer (do not exceed 1000 psi) equipped with fan tip and/or a soft bristle floor scrubber brush on a floor machine may be used to help aid in cleaning. Do not use metal-based or coarse brushes as they may damage the surface.

To remove water stains from calcium or lime build up, 100 grain vinegar can be used. Start by diluting the vinegar, eight parts water to one part vinegar. If needed, you can use the vinegar diluted one to one with water. Avoid using neat or full strength 100 grain vinegar. Scrub the diluted vinegar mixture over the surface. Be sure to completely rinse any residue thoroughly with clean water. Avoid using vinegar mixture or any cleaner in direct sunlight, as direct sun may evaporate cleaning solution and may leave a film or residue on the surface.

Any information provided by Westcoat Specialty Coating Systems is for general purposes only. Nothing presented by Westcoat Specialty Coating Systems constitutes design advice or a recommendation specific to a particular situation. Westcoat Specialty Coating Systems directs you to consult with the appropriate qualified design professional to ensure any product or information meets the requirements for the specific intended use, and complies with all building plans, specifications, codes or regulations. Westcoat Specialty Coating Systems expressly and specifically disclaims responsibility for any damages arising from the use of any information, and each recipient of this information agrees that there is no express or implied warranty, including any implied warranty of merchantability or fitness for a particular purpose, arising from any information provided by Westcoat Specialty Coating Systems.





EXTERIOR COATINGS

Maintenance and Inspections

All exterior coating systems should be periodically inspected and regularly maintained by a Westcoat Qualified Contractor Applicator (QCA). Inspections are required one year after installation and every two years thereafter by a factory authorized representative. After 3-5 years, a "reseal" (thorough cleaning and reapplication of Westcoat topcoat/sealer) may be required. Existing sealer or coating should be lightly abraded before application of topcoat or sealer. Some topcoats and sealers may require additional preparation, prior to recoating. Should damage occur, be sure to contact the original Westcoat applicator to inspect and repair the coating system immediately.

Best Practices

- Do not expose the coating surface to traffic, moisture, or chemical agents until the system is fully cured.
- Outdoor carpet or other matting materials are not recommended, as they may trap moisture, contribute to mildew, mold, and may damage the topcoat or sealer.
- Potted plants and/or planter boxes should be elevated off the surface and moved monthly to allow the coating to dry properly. Planter drainage may cause staining due to fertilizers and growing mediums. Drip pans or saucers should be utilized.
- Outdoor furniture should have coasters or pads to prevent indentations and damage to the coating.
- If barbecues are to be used, it is recommended to place a protective pan down to prevent damage from hot grease or coals.
- Do not cut, slice, or puncture the coating system. This is especially true for all waterproofing systems, such as ALX, ALX Pro, and MACoat.
- Avoid dragging bulky metal, concrete, or other types of objects over the surface.
- Fire pits are not recommended for use with Westcoat coating systems.
- Do not expose the coating system to solvents, harsh chemicals, or acids.
- Avoid subjecting the coating system to repeated heavy rolling loads.
- Tape or other adhesives should not be applied to finished surfaces.

Any information provided by Westcoat Specialty Coating Systems is for general purposes only. Nothing presented by Westcoat Specialty Coating Systems constitutes design advice or a recommendation specific to a particular situation. Westcoat Specialty Coating Systems directs you to consult with the appropriate qualified design professional to ensure any product or information meets the requirements for the specific intended use, and complies with all building plans, specifications, codes or regulations. Westcoat Specialty Coating Systems expressly and specifically disclaims responsibility for any damages arising from the use of any information, and each recipient of this information agrees that there is no express or implied warranty, including any implied warranty of merchantability or fitness for a particular purpose, arising from any information provided by Westcoat Specialty Coating Systems.