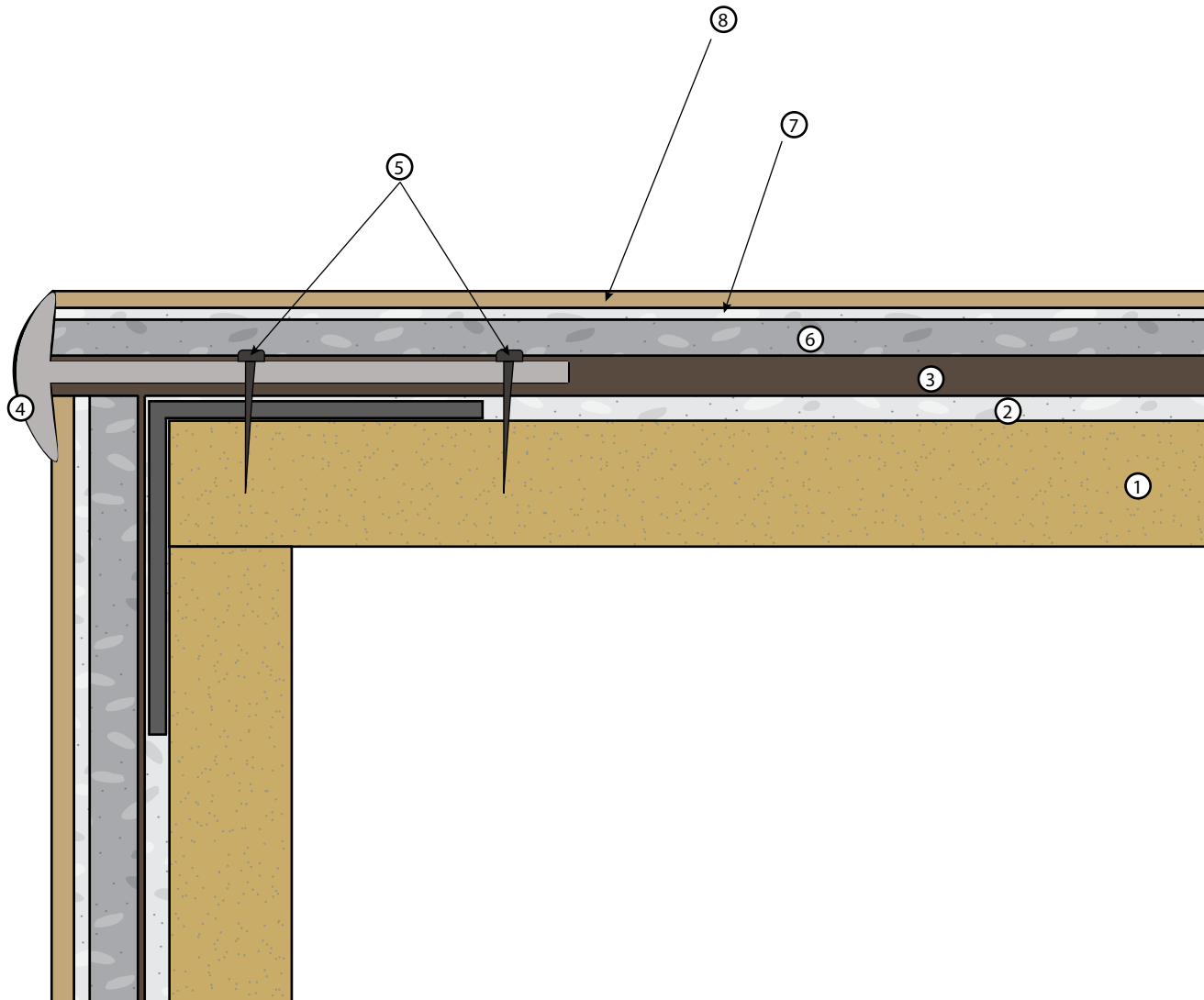


KEYNOTES

- ① Plywood Substrate
- 26 ga. Bonderized Metal Flashing
- ② Skim Coat
- ③ Membrane with Fabric
- ④ Stair Nosing
- ⑤ Corrosion Resistant Screws
- ⑥ Body Coat
- ⑦ Smoothing Coat
- ⑧ SC-10 Acrylic Topcoat



IAPMO ER - 517

- Standard overlap is bottom to top with a 4" overlap.
- Apply WP-53 on all flashing seams and overlaps.
- Do not use copper flashing.
- Minimum 1/4" slope required on all decks
- Refer to local building codes and standards.
- Refer to system and product specification sheets.

All details are for reference only and should be evaluated by architect. These details are not a substitute for specifications, plans or evaluation reports. Architect, consultant or similar professional should review prior to major waterproofing applications.

REV. 10/30/25 TC

MER-KO - STAIR NOSING

DIVISION 07 18 13
Pedestrian Traffic Coatings

SCALE : NTS



westcoat
SPECIALTY COATING SYSTEMS

4007 Lockridge Street • San Diego, CA • 92102
800.250.4519 • westcoat.com