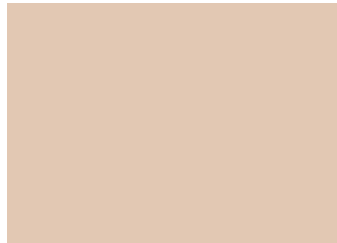
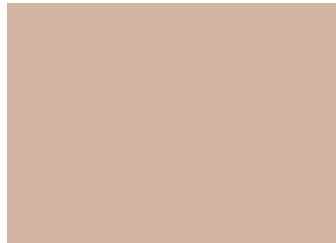


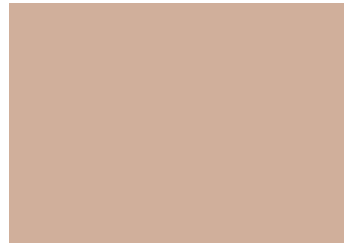
Porcelain | 75



Travatan | 40



Arizona Tan | 82



Sandy Beige | 78



Sand | 11



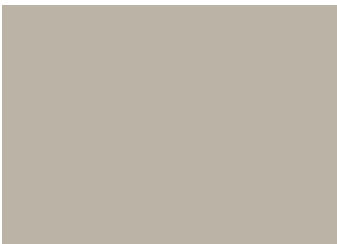
Omaha Tan | 53



Spanish Brown | 43



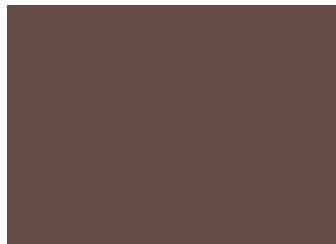
Deep Tan | 27



Concrete Gray | 52



Rocky Nook | 26



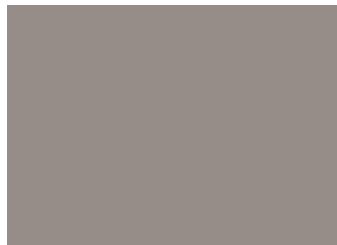
Espresso | 74



Mission Red | 76



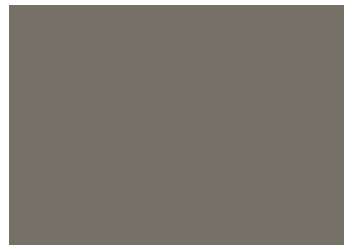
Cape Cod Gray | 41



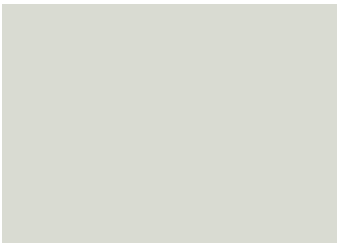
Anchor Gray | 80



Stone Gray | 42



Pewter Gray | 12



*SR Gray | 101



*SR Tan | 100



*SR Heather Gray | 103



*SR Coconut | 110

Black and White also available.

*Solar Reflective line. Refer to the SC-10 Product Specification Sheet for SRI Values and additional information.



CAUTION:

Color will vary between products and sheens. This chart is for reference only. Please request an actual color sample or apply sample on site before beginning any project.



Color Product Number	SC-10 Acrylic Topcoat Availability	CA-10 Acrylic Topcoat Color Pack
Anchor Gray 80	Stock	Stock - Requires SC-10 Mid Base
Arizona Tan 82	Stock	Stock - Requires SC-10 White Base
Black 56	Made To Order	N/A
Cape Cod Gray 41	Stock	Stock - Requires SC-10 White Base
Concrete Gray 52	Stock	Stock - Requires SC-10 White Base
Deep Tan 27	Stock	Stock - Requires SC-10 Mid Base
Espresso 74	Stock	N/A
Mission Red 76	Stock	N/A
Omaha Tan 53	Stock	Stock - Requires SC-10 Mid Base
Pewter Gray 12	Stock	N/A
Porcelain 75	Made To Order	N/A
Rocky Nook 26	Stock	Stock - Requires SC-10 Mid Base
Sand 11	Stock	N/A
Sandy Beige 78	Stock	N/A
Spanish Brown 43	Stock	Stock - Requires SC-10 Mid Base
*SR Coconut 110	Made To Order	N/A
*SR Gray 101	Made To Order	N/A
*SR Heather Gray 103	Made To Order	N/A
*SR Tan 100	Made To Order	N/A
Stone Gray 42	Stock	Stock - Requires SC-10 Mid Base
Travatan 40	Stock	Stock - Requires SC-10 White Base
White 96	Stock	N/A

Lead times based on 5 gallon units. Stock = 2 day lead time | Made To Order = 10 day lead time

Extended manufacturing time may apply to larger volume orders.

Custom Colors available with color matching fee, minimum order and extended manufacturing time.

SR Gray and SR Tan meet the Cool Roof requirements of California Title 24, when installed per Westcoat's Solar Reflective System specifications.

Refer to the SC-10 Acrylic Topcoat Product Specification Sheet for SRI Value test data. See SC-10 Topcoat color chart online for more information, colors, and lead time.

